



ЭРҮҮЛ  
МЭНДИЙН ЯАМ



MEH  
Research & consulting

**Report on Development of DRGs for the State Budget and HIF health services**

Ulaanbaatar, 2018

## Introduction

**Diagnosis Related Group (DRG)** is a patient classification system that classifies diseases along with similar characteristics of 1) clinical symptoms, 2) expenses utilized for services, 3) sufficient numbers of cases in statistical data<sup>1</sup>. The system covers wide range issues such as to determine diagnostic groups, to create appropriate tariffs, and improve information system and control. A hospital bears loss if case expenses higher than patient payment and hospital earn revenue in the case of lower expenses, but if every case paid based on the real cost there will be no incentives created in terms of efficiency in case treatment. Payment based on the average cost would make additional revenue through treating many cases with lower than the average cost and considering quality of services; and attract more patients<sup>1</sup>.

Countries use the system with the following aims:

- As a tool to purchase services,
- To finance services of the health sector,
- To improve quality of services,
- To enhance efficiency,
- To strengthen appropriate hospital financing.

Mongolia has been changed DRGs few times for payment of health services financed by the Health Insurance Fund. The Health Insurance Funding became reliable and sustainable source of financing for the last decades containing 20-23 percent of the total health expenditure. There is a need to extend DRGs in order to upgrade the system and reflect International Classification of Procedure 9 in the case payment system. An appropriate disease classification system would fulfill significant role in one of the health sector objective to protect citizens from health induced financial risks.

### Objectives

To develop Diagnostic related groups for the State Budget and Health Insurance Fund

#### Specific objectives

1. To introduce extended DRGs for the state budget and Health Insurance Fund using ICD 10 and IPC 9 to the MOH

#### Expected results:

- Introduced methodology to contractors and financiers
- Submitted the Report of extended DRGs using ICD 10 and IPC 9 to the MOH

---

<sup>1</sup>Langenbrunner JC, Cashin C, O'Dougherty S, editors. *Designing and implementing provider payment systems: how to manuals*. Washington: The World Bank; 2009

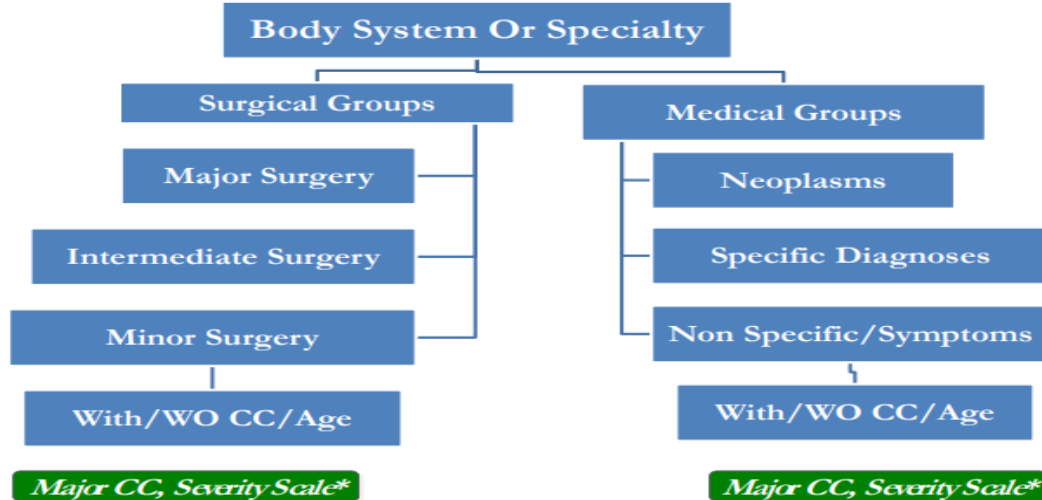
The countries use 2 methods in DRG development 1/ to adopt DRGs used in the other countries 2/ to create own version. The system is introduced step by step in the countries and modified based on lessons learnt from their practices.

The literature review suggested that a development process of DRGs should be integrated not separate explicitly physicians' advice in clinical homogeneity of cases and combining practice of diagnostic groups based on statistical analysis and existing data<sup>2</sup>.

The most countries are used a computer programs based open source from internet in the development of DRGs.

### International design of DRG development

## Design Structure of the DRG



### Steps to develop DRGs<sup>3</sup>

- To create data for assessment
- To determine variables and its limits

The countries necessarily have been using the following variables:

- Age (Nord DRG uses 6 types of age categories: 1. Child age should be under 17 year old or not more that 6 574 days. 2. Adolescent age should be 14 нас year old or not less or more than 5114. 3. Reproductive age should be 56 years or no more than 20440 days. 4. Infant should be 1 year old or no more than 365 days. 5. Patient age should not be

<sup>2</sup> Designing of DRGs, 1 Oct 2016

<sup>3</sup> Guidelines of USA, Australia, Mongol and Vietnam

above 125 year old or no more than 45654 days. 6. Child except infant should be below 18 year old or no more than 6574 days)

- Gender
- Admitted and discharged dates (it equals to quotient of discharged and admitted dates. Thailand uses a special classification for the cases that took under 6 hours in a hospital.<sup>4</sup>)
- Principle diagnosis
- Secondary diagnosis
- Complications
- Whether surgical procedure is done (it will counted only in case surgery is done in surgery room.)
- Discharge condition (1. Agreed 2. Discharged without approval 3. Escaped 4. Transferred 5. Other 8. Died, autopsy done 9. Died, autopsy not done<sup>4</sup>)
- Average length of stay (Not more than 365 days, Vietnam).

There is a need to consider fewer variables which are practically sound however some countries use many variables in the development of DRS.

#### Some common variables

	AR DRG	Nord DRG	Case mix, Vietnam
Age	+	+	+
Gender	+	+	+
Principle diagnosis	+	+	+
Secondary diagnosis	+	+	+
Average length of stay	+	+	+
Procedure	+	+	+
Discharge condition	+	+	+

#### ➤ To determine main diagnostic category

The countries have a different number of MDCs namely 26 in USA and 23 in Australia. It helps to arrange statistical data and not to mix up cases and procedures in different groups<sup>5</sup>. International practice shows that pre main diagnostic category is determined and it contains extreme high cost cases (organ transplantation etc).

#### Main diagnostic category

1. Diseases and Disorders of the Nervous System
2. Diseases and Disorders of the Eye
3. Diseases and Disorders of the Ear, Nose, Mouth And Throat

<sup>4</sup> Thailand grouping process, Chairaj Zunsontiporn, Health Research Center, Vietnam

<sup>5</sup><https://www.cms.gov/icd10manual/version31R-fullcode-cms/P0001.html>

4. Diseases and Disorders of the Respiratory System
  5. Diseases and Disorders of the Circulatory System
  6. Diseases and Disorders of the Digestive System
  7. Diseases and Disorders of the Hepatobiliary System And Pancreas
  8. Diseases and Disorders of the Musculoskeletal System And Connective Tissue
  9. Diseases and Disorders of the Skin, Subcutaneous Tissue And Breast
  10. Diseases and Disorders of the Endocrine, Nutritional And Metabolic System
  11. Diseases and Disorders of the Kidney And Urinary Tract
  12. Diseases and Disorders of the Male Reproductive System
  13. Diseases and Disorders of the Female Reproductive System
  14. Pregnancy, Childbirth And Puerperium
  15. Newborn And Other Neonates (Perinatal Period)
  16. Diseases and Disorders of the Blood and Blood Forming Organs and Immunological Disorders
  17. Myeloproliferative DDs (Poorly Differentiated Neoplasms)
  18. Infectious and Parasitic DDs (Systemic or unspecified sites)
  19. Mental Diseases and Disorders
  20. Alcohol/Drug Use or Induced Mental Disorders
  21. Injuries, Poison And Toxic Effect of Drugs
  22. Burns
  23. Factors influencing health status and contact with health services
  24. Multiple trauma
  25. AIDS
- *To assess that cases are homogenous in clinical perspective and case are sufficient in numbers*
- *To separate cases as medical and surgical and count procedure and complications*
- Nord DRG suggests that special guide is needed in integration of ICD-10 and ICD 9 CM due to its mismatching structure and content. In practice there is no possibility to develop doublethink guidelines<sup>6</sup>. The countries use different classification system in procedure classification. For instance: Nord DRG uses Nomesco surgical procedure classification and Spain, Portugal and Poland use ICD 9 CM<sup>7</sup>.

---

<sup>6</sup>Nord DRG User's Manual

<sup>7</sup>Diagnosis-Related Groups in Europe - Moving towards transparency, efficiency and quality in hospitals, The European Observatory on Health Systems and Policies, 2011

➤ *Coding*

New Zealand uses 4 numeric fields. ADDS expresses that A and S is word and D is numeric:

1. A – word reflects main diagnostic category.
2. DD - 2 field number notes to be precise: 01-49 surgical, 40-59 other, 60-99 medical.
3. S – it indicates that how expenses are incurred (A-the highest, B- second highest, C – thirs highest, D – 4<sup>th</sup> highest, Z –other).

Mongolia has changes inpatient and outpatient DRGs based on IR DRGs in 2007<sup>8</sup>. Some currently introduced health services such as day treatment, day surgery, chemotherapy are given chance to expand the system. Also a tariff introduction of the high cost devices in 2016 is given possibility to make close to real cost however it can be basis of moral hazard.

### **I PART. Inpatient DRGs**

In this study, the next steps were used to determine inpatient DRGS:

1. International literature review has been done. (Scandinavian used Nord DRG, Australian IR DRG, DRGs used for Medicare and Medicaid USA, Vietnam DRG system based on Tai DRG and other sources).
2. Quality and substantial number of data is essential to determine DRGs because at the end analysis cut off big data<sup>9</sup>. Therefore, all inpatient data in 2017 were entered in to EXCEL and SPSS program from the hospitals including State Hospitals I, II, III, National Trauma and Orthopedics Center, National Communicable Center, National Cancer Center, National Mental Health Center, National Maternal And Child Health Center, Orkhan and Uvurkhangai Regional Diagnostic and Treatment Centers, Selenge, Tuv, Zavkhan, Khuvsgul, Dundgobi, Darkhan general hospitals, Khan-Uul District hospital and Urguu Maternity hospital.
3. Data cleaning was done on the collected cases. (Analysis was done for total 226338 cases: hospital cases- 212749 and maternity cases -12589).
4. Analysis was done for 2015, 2016 data of the hospitals in order make sure that there is no substantial difference in number of cases and frequency of cases occurred in years. (Annex 1).
5. Secondary diagnosis and complications create a lot of expenses in hospitals and cost gap between cases hamper in objectives of DRG introduction. USA Medicare and Medicaid services center and other countries classify complications for 4 degrees (бара, дунд, гол, ноцтой<sup>10</sup>) and die prognosis for 4degrees. Attempt to include complications in the costing was not successful because most of hospitals not registered complications. Then in this step coding was done based on clinical homogeneity (Annex 2). In the

<sup>8</sup>Mongol DRG

<sup>9</sup>Adopting Thai DRG for Vietnam Universal Health Coverage: A case of BA Vi District Hospital, Dung Chi Tham, 2015

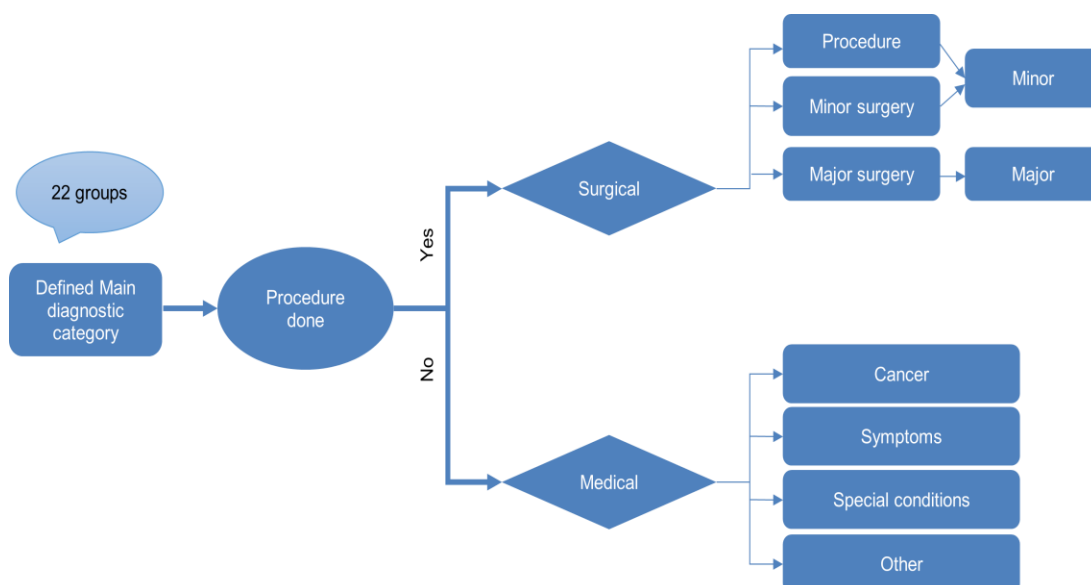
<sup>10</sup>USA medicare, ICD-9-CM MS-DRG Definitions Manual

coding some ICD 10 diagnosis gave chances to determine complications. For instance: degree of burn, complicated surgery cases etc.

#### Example of coding by clinical homogeneity

ICD 10	ICD 10 code	Number of cases	Number of MDC	Coding
Other appendicitis	K36.0	14	6	RM
Unspecified appendicitis	K37.0	1	6	RM
Hyperplasia of appendix	K38.0	2	6	RM
Diverticulum of appendix	K38.2	1	6	RM
Other specified diseases of appendix	K38.8	179	6	RM

6. The survey is used the following diagram for the development of DRGs.



Based on inpatient case analysis MDC was defined as 22.

- i. Pre MDC is mostly consisted of very high cost cases (organ transplantation) in the international practice. Ambulance and ICU can be separately considered as pre MDC because general principle and cost of these services are quite different from inpatient cases.
- ii. MDC 23 is covered health conditions created by health care organizations. These kinds of cases are not registered in Mongolia.
- iii. MDC 24 is covered AIDS. Only 8 cases were registered in Mongolia as an inpatient case. So AIDS was coded under MDC 18.

MDC list was created using ICD 10 codes and considering organ neoplasms, symptoms and special conditions. Some infectious diseases, cancers, illnesses and certain conditions originating in the perinatal period and congenital malformations, deformations and chromosomal abnormalities were allocated into the related organ system. For instance: Digestive system cancers are into MDC 6, brain injuries into MDC 1 etc. After the allocation of the cases, the leading cases were determined by the defined MDC (Annex 3).

### Allocation of principle diagnosis into MDC

	<b>MDC name</b>	<b>Related ICD 10 codes</b>
1	Diseases and Disorders of the Nervous System	A80-A89, A17, A39, C70-C72, D32-D33, G00-G99, I60-I69, S00-S04, S06-S09, R25-R29, D42-D43, Q00-Q07, T90
2	Diseases and Disorders of the Eye	C69, D31, D32, H00-H59, S05, T15, T26
3	Diseases and Disorders of the Ear, Nose, Mouth And Throat	C00-C14, D02, D10-D11, H60-H95, K10-K14, R47-R49, T16, Q16-Q18, Q35-Q37
4	Diseases and Disorders of the Respiratory System	A15-A16, C30-C39, D02, D14-D15, D38, J00-J99, R04-R09, Q30-Q34, T17, T27
5	Diseases and Disorders of the Circulatory System	I00-I52, I70-I99, R00-R03, Q20-Q28
6	Diseases and Disorders of the Digestive System	A00-A09, C15-C21, C26, D00-D01, D12-D13, D37, K20-K67, K90-K93, R10-R19, Q38-Q43, Q45.8-Q45.9, T18
7	Diseases and Disorders of the Hepatobiliary System And Pancreas	B15-B19, C22-C25, K70-K77, K80-K87, R17-R18, Q44, Q45.0-Q45.3
8	Diseases and Disorders of the Musculoskeletal System And Connective Tissue	C40-C41, D16, M00-M99, Q65-Q79
9	Diseases and Disorders of the Skin, Subcutaneous Tissue And Breast	B00-B09, C43-C50, D04-D05, D23-D24, L00-L99, N60-N64, R20-R23, Q80-Q83
10	Diseases and Disorders of the Endocrine, Nutritional And Metabolic System	C73-C75, D34-D36, D44, E00-E90
11	Diseases and Disorders of the Kidney And Urinary Tract	C64-C68, D30, D41, N00-N39, N99, R30-R39, Q60-Q64, T19
12	Diseases and Disorders of the Male Reproductive System	C60-C63, D29, D40, N40-N51, Q53-Q55
13	Diseases and Disorders of the Female Reproductive System	C51-C58, D06, D25-D28, D39, N70-N98, Q50-Q52
14	Pregnancy, Childbirth And Puerperium	O00-O99



15	Newborn And Other Neonates (Perinatal Period)	P00-P96, Q84-Q89
16	Diseases and Disorders of the Blood and Blood Forming Organs and Immunological Disorders	C81-C97, D47, D50-D89, Q90-Q99
17	Myeloproliferative DDs (Poorly Differentiated Neoplasms)	C76-C80, C97, D03, D07, D09, D17-D22, D45-D46, D48
18	Infectious and Parasitic DDs (Systemic or unspecified sites)	A18-A38, A40-A99, B20-B99
19	Mental Diseases and Disorders	F00-F09, F20-F99, R40-R46
20	Alcohol/Drug Use or Induced Mental Disorders	F10-F19
21	Injuries, Poison And Toxic Effect of Drugs	S10-S99, T00-T14, T36-T88, T91-T98
22	Burns	T20-T25, T28-T35

7. All allocated cases into MDC were divided into medical, surgical and other. Analysis was done that how ICD 10 cases dropped into ICP 9. The cases with procedure were consisted of 36.6% percent of all collected data (Annex 4).
8. In the first run principle diagnosis were coded more openly and procedure cases separately avoiding combining different cost cases; and determined 1622 DRGs using comuter program.
9. Recoding of cases was done based on the MOH recommendation to decrease a number of DRGs due to expected management and control burden. Procedure coding was integrated into surgical, medical and other cases. Surgical cases were separated in to major and minor. Later on minor surgery cases and others were combined due to no significant difference in costing.
  - i. Major surgery is considered as any invasive operative procedure in which a more extensive resection is performed, e.g. a body cavity is entered, organs are removed, or normal anatomy is altered.
  - ii. Minor surgery is defined as any invasive operative procedure in which only skin or mucus membranes and connective tissue is resected e.g. vascular cutdown for catheter placement, implanting pumps in subcutaneous tissue.
  - iii. Other – some diagnostic procedure, ultrasonography, chemotherapy etc.
10. Costing and costing weight was estimated based on ICD 10 cases.
11. DRGs were developed based on disease coding and costing using EXCEL and SPSS program.

12. Using methodology of Thailand and New Zealand, DRG coding was applied as first two numeric field for MDC, the next two numeric field for procedure and the last one numeric field for complication and determined 547 DRGs (Annex 4). For instance:

- first two numeric fields: 1-22 for MDC
- Next two numeric fields for procedure: 0-49 – Medical  
50-99– Surgical
- Last one numeric field for complication.

## II PART. OUTPATIENT, AMBULANCE AND ICU DRGs

- Outpatient DRGs defined based on clinical difference and costing and cost weight was calculated as the below.

DRG code	Outpatient services	Cost	Cost weight
00010	Skin and allergy	10,204	<b>0.871</b>
00020	Injury and trauma	13,936	<b>1.189</b>
00030	Internal medicine	9,304	<b>0.794</b>
00040	AIDS, STI, TB	6,285	<b>0.536</b>
00050	Surgery	12,108	<b>1.033</b>
00060	Eye	6,483	<b>0.553</b>
00070	Mental health	14,423	<b>1.231</b>
00080	Traditional medicine	11,847	<b>1.011</b>
00090	Concer	12,968	<b>1.107</b>
00100	Communicable diseases	5,437	<b>0.464</b>
00110	Child health	8,664	<b>0.739</b>
00120	Ear, nose, larynx	8,455	<b>0.722</b>
00130	Teeth	26,596	<b>2.270</b>
00140	Genecology, reproductive health	17,323	<b>1.479</b>
Бүгд	Total	<b>11,716</b>	

- However, rehabilitation is one of outpatient services costing and cost weight was separately determined because of time consumption of medical techniques and human labour.

DRG code	Rehabilitation	Cost	Cost weight
00150	Rehabilitation	148,273	<b>1.000</b>

- Day care requires surgical and some procedures in outpatient settings and quite different from other outpatient services. Then it was calculated separately as the below.

DRG code	Rehabilitation	Cost	Cost weight
00160	Day care	223,703	<b>1.766</b>

00170	Radiation therapy	176,476	<b>1.394</b>
00180	Chemiotherapy	45,046	<b>0.356</b>
00190	Palliative care	61,331	<b>0.484</b>
Бүгд		<b>126,639</b>	

- Ambulance and ICU cost were calculated as the below.

DRG code	Ambulance	Cost	Cost weight
00200	Ambulance	35,486	<b>0.702</b>
00210	Emergency	65,635	<b>1.298</b>
Бүгд		<b>50,561</b>	
DRG code	ICU	Cost	Cost weight
00220	NCCD ICU	26,058,194	<b>1.000</b>
00230	ICU	1,922,723	<b>1.000</b>

### PART III. Recommendation

1. To take actions to upgrade information registration system in terms of secondary diagnosis, complication and procedure cases
2. To introduce registration system of traditional medicine in accordance to ICD 10
3. To pilot the newly developed DRGs at the 10 pilot hospitals and create appropriate controlling system on registration of patient cases and relevant information
4. To organize discussions on information safety within the hospital management teams and consensus on having a position on information coding
5. To make a decision on purchasing of the state budget services through Health Insurance Fund

**References:**

1. Langenbrunner JC, Cashin C, O'Dougherty S, editors. *Designing and implementing provider payment systems: How to Manuals*. The World Bank, USAID, 2009
2. Leon Paff Computer Based Coding. 3M Health Information Systems. 2007
3. Reinhard Busse, Alexander Geissler et al: Diagnosis-Related Groups in Europe - Moving towards transparency, efficiency and quality in hospitals, The European Observatory on Health Systems and Policies, 2011
4. Report of the Survey on Actual Costs of the Healthcare Services, MOH, WHO, ADB, MNUMS, 2015
5. Richard F. Averill, M.S., Norbert Goldfield, M.D., et al: Development of the All Refined DRGs (APR-DRGs), 3M HIS Research Report, 2003
6. Defining the Medicare Severity Diagnosis Related Groups (MS-DRGs), Version 34.0, 2016
7. Adopting Thai DRG for Vietnam Universal Health Coverage: A case of BA Vi District Hospital, Dung Chi Tham, 2015
8. USA medicare, ICD-9-CM MS-DRG Definitions Manual-  
<https://www.cms.gov/icd10manual/version31R-fullcode-cms/P0001.html>
9. <http://www.nordcase.org/eng/materials/manuals/>
10. 2009 он, ЭМД-аас санхүүжих тусламж үйлчилгээний оношийн хамааралтай бүлгийн жагсаалт, түүний өртгийн жинг баталсан ЭМС-ын 180 тоот тушаал
11. All patient refined diagnosis related groups (APR-DRGs) Version 20.0 Methodology Overview 3M Health Information Systems Richard F. Averill Norbert Goldfield et al: 2003
12. Australian Refined Diagnosis Related Groups Version 6.x Definitions manual addendum, Commonwealth of Australia 2012
13. ICD-10 4th Edition HRG4 / HRG4+ Information, Health and Social Care Information Centre, National Casemix Office [www.ic.nhs.uk/casemix](http://www.ic.nhs.uk/casemix), 2013
14. Case-mix Analysis Across Patient Populations and Boundaries: A Refined Classification System Designed Specifically for International Quality and Performance Use, Marc Berlinguet et al:
15. The New Zealand Casemix System: An overview An Overview, 2015 v1.2
16. <http://systems.hscic.gov.uk/data/clinicalcoding/codingstandards/icd10>
17. <http://systems.hscic.gov.uk/data/clinicalcoding/codingstandards/opcs4>
18. <https://www.who.int/bulletin/volumes/91/10/12-115931/en/>
19. Design and development of the Diagnostic Related Groups, PBL-038 October 01, 2016

## Annex 1

Table 1. Inpatient illness report (by organ system)

Organ system / cases	2015 cases	%	2016 cases	%
I Certain infectious and parasitic diseases	31984	3.8	27341	3.5
II Neoplasms	21586	2.5	20773	2.6
III Diseases of the blood and blood-forming organs and certain disorders involving the immune mechanism /D50-D89/	3396	0.4	3024	0.4
IV Endocrine, nutritional and metabolic diseases	14985	1.8	12543	1.6
V Mental and behavioural disorders	14602	1.7	13787	1.8
VI Diseases of the nervous system	59828	7.0	56229	7.2
VII Diseases of the eye and adnexa	8475	1.0	7876	1.0
VIII Diseases of the ear and mastoid process	4756	0.6	4545	0.6
IX Diseases of the circulatory system	123334	14.5	116131	14.8
X Diseases of the respiratory system	140881	16.6	104597	13.3
XI Diseases of the digestive system	102544	12.1	100134	12.8
XII Diseases of the skin and subcutaneous tissue	20639	2.4	19284	2.5
XIII Diseases of the musculoskeletal system and connective tissue	38759	4.6	36071	4.6
XIV Diseases of the genitourinary system	94541	11.1	90860	11.6
XV Pregnancy, childbirth and the puerperium	124634	14.7	127630	16.3
XVI Certain conditions originating in the perinatal period	6950	0.8	7548	1.0
XVII Congenital malformations, deformations and chromosomal abnormalities	3710	0.4	3787	0.5
XVIII Symptoms, signs and abnormal clinical and laboratory findings, not elsewhere classified	131	0.0	230	0.0
XIX Injury, poisoning and certain other consequences of external causes	33316	3.9	32491	4.1
Total	849051	100	784881	100

Table 2. Leading inpatient illnesses in 2015 and 2016

Illness / cases	2015	2016	Total	%
Хатгалгаа /J12-J18/	73814	46065	119879	13.6
Нэг ургийн хэвийн төрлөг /O80/	54016	56392	110408	12.5

Сувганцрын -завсрын эдийн архаг нефрит /N11/	46910	43646	90556	10.3
Анхдагч даралт ихсэх өвчин /I10/	36936	35934	72870	8.3
Бусад зүрхний ишемийн өвчнүүд /I20, I23-I25/	29986	27380	57366	6.5
Кесар хагалгаараар нэг ургийг төрүүлэх /O82/	19053	19423	38476	4.4
Цочмог амьсгууртас ба цочмог амьсгуурсанцартас /J20-J21/	21185	16277	37462	4.3
Мэдрэл, мэдрэлийн ёзоор ба сүлжээний эмгэг /G52-G59/	18582	16491	35073	4.0
Тархи судасны бусад өвчнүүд /I64-I69/	17206	16020	33226	3.8
Өмөн, хорт хавдар бүгд /C00-D09/	16762	15782	32544	3.7
Халдварт бус суулгалт өвчин /K52.9/	15019	14838	29857	3.4
Гиваан (холелитиаз) ба цөсхүүдийтэс /K80-K81/	13739	13171	26910	3.1
Улаан бурхан /B05/	16016	10222	26238	3.0

УГТЭ, ХСҮТ, ЭХЭМҮТ, СЭМҮТ, ХӨСҮТ, Өргөө амаржих газар, Хан-Уул ЭМТ, Төв, Сэлэнгэ аймгийн нэгдсэн эмнэлгүүдийн эрхтэн тогтолцооны өгөгдлийг ашиглан хамгийн их тохиолдлуудыг ялгасан.

**Table 3.** First State Hospital

<b>Inpatient illness</b>	<b>Total</b>	<b>Alos</b>	<b>%</b>
<b>I</b> Certain infectious and parasitic diseases	5	8,4	0,0
<b>II</b> Neoplasms	621	6,7	3,9
<b>III</b> Diseases of the blood and blood-forming organs and certain disorders involving the immune mechanism /D50-D89/	15	8,4	0,1
<b>IV</b> Endocrine, nutritional and metabolic diseases	486	9,5	3,1
<b>V</b> Mental and behavioural disorders	0	0,0	0,0
<b>VI</b> Diseases of the nervous system	1656	9,6	10,4
<b>VII</b> Diseases of the eye and adnexa	1255	6,7	7,9
<b>VIII</b> Diseases of the ear and mastoid process	183	8,6	1,2
<b>IX</b> Diseases of the circulatory system	4270	9,7	26,9
<b>X</b> Diseases of the respiratory system	2251	8,2	14,2
<b>XI</b> Diseases of the digestive system	3110	7,8	19,6
<b>XII</b> Diseases of the skin and subcutaneous tissue	99	8,7	0,6
<b>XIII</b> Diseases of the musculoskeletal system and connective tissue	457	10,4	2,9
<b>XIV</b> Diseases of the genitourinary system	993	9,2	6,3

XV Pregnancy, childbirth and the puerperium	0	0,0	0,0
XVI Certain conditions originating in the perinatal period	0	0,0	0,0
XVII Congenital malformations, deformations and chromosomal abnormalities	473	9,2	3,0
XVIII Symptoms, signs and abnormal clinical and laboratory findings, not elsewhere classified /	1	9,0	0,0
XIX Injury, poisoning and certain other consequences of external causes	15875	8,7	100,0
Total			

Table 4. NCD

Inpatient illness	Total	Alos	%
I Certain infectious and parasitic diseases	24	12,7	0,3
II Neoplasms	6971	8,7	93,0
III Diseases of the blood and blood-forming organs and certain disorders involving the immune mechanism /D50-D89/	0	0,0	0,0
IV Endocrine, nutritional and metabolic diseases	29	11,4	0,4
V Mental and behavioural disorders	1	12,0	0,0
VI Diseases of the nervous system	2	11,0	0,0
VII Diseases of the eye and adnexa	0	0,0	0,0
VIII Diseases of the ear and mastoid process	0	0,0	0,0
IX Diseases of the circulatory system	25	9,6	0,3
X Diseases of the respiratory system	46	10,8	0,6
XI Diseases of the digestive system	160	9,7	2,1
XII Diseases of the skin and subcutaneous tissue	19	9,4	0,3
XIII Diseases of the musculoskeletal system and connective tissue	13	8,2	0,2
XIV Diseases of the genitourinary system	192	8,8	2,6
XV Pregnancy, childbirth and the puerperium	3	10,3	0,0
XVI Certain conditions originating in the perinatal period	0	0,0	0,0
XVII Congenital malformations, deformations and chromosomal abnormalities	3	13,3	0,0
XVIII Symptoms, signs and abnormal clinical and laboratory findings, not elsewhere classified /	0	0,0	0,0
XIX Injury, poisoning and certain other consequences of external causes	0	0	0
Total	7494	8,8	100,0

Table 5. NMCHC

Inpatient illness	Total	Alos	%
I Certain infectious and parasitic diseases	52	10,6	0,1

II Neoplasms	1277	8,0	3,5
III Diseases of the blood and blood-forming organs and certain disorders involving the immune mechanism /D50-D89/	662	8,0	1,8
IV Endocrine, nutritional and metabolic diseases	266	11,5	0,7
V Mental and behavioural disorders	97	9,5	0,3
VI Diseases of the nervous system	1302	9,9	3,6
VII Diseases of the eye and adnexa	705	7,6	1,9
VIII Diseases of the ear and mastoid process	373	9,7	1,0
IX Diseases of the circulatory system	172	9,8	0,5
X Diseases of the respiratory system	4182	6,6	11,4
XI Diseases of the digestive system	3018	6,5	8,3
XII Diseases of the skin and subcutaneous tissue	598	5,5	1,6
XIII Diseases of the musculoskeletal system and connective tissue	287	11,9	0,8
XIV Diseases of the genitourinary system	2840	9,3	7,8
XV Pregnancy, childbirth and the puerperium	16468	4,2	45,0
XVI Certain conditions originating in the perinatal period	2291	9,9	6,3
XVII Congenital malformations, deformations and chromosomal abnormalities	1070	8,8	2,9
XVIII Symptoms, signs and abnormal clinical and laboratory findings, not elsewhere classified /	280	5,9	0,8
XIX Injury, poisoning and certain other consequences of external causes	0	0	0
Total	36575	6,3	100,0

Table 6. NMHC

Inpatient illness	Total	Alos	%
I Certain infectious and parasitic diseases	0	0	0
II Neoplasms	0	0	0
III Diseases of the blood and blood-forming organs and certain disorders involving the immune mechanism /D50-D89/	0	0	0
IV Endocrine, nutritional and metabolic diseases	0	0	0
V Mental and behavioural disorders	5721	22,758434	100
VI Diseases of the nervous system	0	0	0
VII Diseases of the eye and adnexa	0	0	0
VIII Diseases of the ear and mastoid process	0	0	0
IX Diseases of the circulatory system	0	0	0
X Diseases of the respiratory system	0	0	0
XI Diseases of the digestive system	0	0	0
XII Diseases of the skin and subcutaneous tissue	0	0	0
XIII Diseases of the musculoskeletal system and connective	0	0	0



tissue			
XIV Diseases of the genitourinary system	0	0	0
XV Pregnancy, childbirth and the puerperium	0	0	0
XVI Certain conditions originating in the perinatal period	0	0	0
XVII Congenital malformations, deformations and chromosomal abnormalities	0	0	0
XVIII Symptoms, signs and abnormal clinical and laboratory findings, not elsewhere classified /	0	0	0
XIX Injury, poisoning and certain other consequences of external causes	0	0	0
Total	5721	22,758434	100

Table 7. NCCD

Inpatient illness	Total	Alos	%
I Certain infectious and parasitic diseases	9881	16,1	88,0
II Neoplasms	3	9,3	0,0
III Diseases of the blood and blood-forming organs and certain disorders involving the immune mechanism /D50-D89/	0	0,0	0,0
IV Endocrine, nutritional and metabolic diseases	3	6,3	0,0
V Mental and behavioural disorders	0	0,0	0,0
VI Diseases of the nervous system	6	4,5	0,1
VII Diseases of the eye and adnexa	0	0,0	0,0
VIII Diseases of the ear and mastoid process	0	0,0	0,0
IX Diseases of the circulatory system	2	2,5	0,0
X Diseases of the respiratory system	83	5,6	0,7
XI Diseases of the digestive system	1186	9,6	10,6
XII Diseases of the skin and subcutaneous tissue	36	3,8	0,3
XIII Diseases of the musculoskeletal system and connective tissue	6	8,2	0,1
XIV Diseases of the genitourinary system	7	4,6	0,1
XV Pregnancy, childbirth and the puerperium	10	12,4	0,1
XVI Certain conditions originating in the perinatal period	0	0,0	0,0
XVII Congenital malformations, deformations and chromosomal abnormalities	0	0,0	0,0
XVIII Symptoms, signs and abnormal clinical and laboratory findings, not elsewhere classified /	0	0,0	0,0
XIX Injury, poisoning and certain other consequences of external causes	0	0	0
Total	11224	15,3	100,0

MCD is occurred mixed way in FSH, NCC, NMCHC, NCCD except NMHC.

Table 8. Allocation example of ICD 10 codes into MDC

ICD10	# of Cases	MDC	Codes		ICD10	# of Cases	MDC	Codes
	1							
A02.0	140	6	A		A15.5	3	4	B
A02.8	1	6	A		A15.6	139	4	B
A02.9	4	6	A		A15.7	4	4	B
A03.0	2382	6	A		A15.9	5	4	B
A03.1	39	6	A		A16.0	160	4	FC
A03.3	1	6	A		A16.1	6	4	FC
A03.8	14	6	A		A16.2	51	4	FC
A03.9	49	6	A		A16.3	11	4	FC
A04.0	31	6	A		A16.4	1	4	FC
A04.1	5	6	A		A16.5	204	4	FC
A04.2	1	6	A		A16.8	1	4	FC
A04.3	7	6	A		A17.0	12	1	C
A04.4	4	6	A		A17.8	2	1	C
A04.6	2	6	A		A18.0	263	18	D
A04.7	1	6	A		A18.1	10	18	D
A04.8	65	6	A		A18.2	87	18	D
A04.9	105	6	A		A18.3	119	18	D
A05.0	46	6	F		A18.4	3	18	D
A05.8	12	6	F		A18.5	2	18	D
A05.9	6	6	F		A18.8	33	18	D
A06.0	1	6	FA		A19.0	100	18	FD
A08.0	5	6	FB		A19.1	147	18	FD
A08.4	1	6	FB		A19.8	3	18	FD
A08.5	5	6	FB		A23.0	1562	18	I
A15.0	1344	4	B		A23.1	258	18	I
A15.1	9	4	B		A23.2	3	18	I
A15.2	3	4	B		A23.3	1	18	I
A15.3	2	4	B		A23.8	145	18	I
A15.4	75	4	B		A23.9	193	18	I
A32.1	1	18	FI		B02.8	75	9	FR
A38.0	560	18	FI		B02.9	27	9	FR
A39.0	6	1	FG		B05.0	2	9	FS
A39.2	4	1	FG		B06.0	7	9	FS

## Annex 3.

Table 9. Inpatient cases by MDC

## 1. Diseases of the nervous system /G00-G99/

Illness and disease	2015	2016	Total	%
<b>Total</b>	<b>59828</b>	<b>56229</b>	<b>116057</b>	<b>100</b>
Мэдрэл, мэдрэлийн ёзоор ба сүлжээний эмгэг /G52-G59/	18582	16491	35073	30,2
Мэдрэлийн тогтолцооны бусад өвчнүүд /G10-G13, G21-G26, G31, G32, G36-G37, G46-G47, G60-G73, G90-G99/	13092	12972	26064	22,5
Толгой өвдөх /G43-G44/	8268	7948	16216	14,0
Эпилепси, уналт /G40-G41/	6314	6224	12538	10,8
Дистони /G24/	5090	4267	9357	8,1
Нүүрний мэдрэлийн эмгэг /G51/	2582	2479	5061	4,4
Тархины цус багасах дайрал ба түүнд хамаарах хамшинжүүд /G45/	2281	2285	4566	3,9
Тархины саа ба саажилтын хамшинжүүд /G80-G83/	1330	1318	2648	2,3
Төв мэдрэлийн тогтолцооны үрэвсэлт өвчин /G01-G09/	1263	1272	2535	2,2
Гурвалсан мэдрэлийн эмгэг /G50/	631	584	1215	1,0
Тархмал хатуурал /G35/	169	147	316	0,3
Паркинсоны өвчин /G20/	142	144	286	0,2
Бактерт мэнэн ХАГ /G00/	75	85	160	0,1
Алцхаймерын өвчин /G30/	9	13	22	0,0

## 2. Diseases of the eye and adnexa

Illness and disease	2015	2016	Total	%
<b>Total</b>	<b>8475</b>	<b>7876</b>	<b>16351</b>	<b>100</b>
Болорын эмгэгүүд /H25-H28/	3124	2823	5947	36,4
Нүд ба дайврын бусад өвчнүүд /H03, H05-H06, H20-H22, H30-H32, H34-H36, H43- H48, H51, H53, H55-H59/	1552	1480	3032	18,5
Налихын эмгэгүүд, конъюнктивит /H10-H13/	877	794	1671	10,2
Глаукома /H40-H42/	796	785	1581	9,7
Эврэвчтэс ба шигэвч эврэвчийн бусад өвчин /H15-H19/	595	593	1188	7,3
Зовхины үрэвсэл /H00-H01/	511	487	998	6,1
Нулимсны эрхтэний эмгэг /H04/	402	315	717	4,4
Хялар /H49-H50/	269	263	532	3,3
Рефракци ба аккомодацийн эмгэг /H52/	181	113	294	1,8
Торовчийн хуурал ба язрал /H33/	110	154	264	1,6
Сохор ба хараа муудах /H54/	58	69	127	0,8

## 3. Чих ба хөхлөг сэртэнгийн өвчин

Illness and disease	2015	2016	Total	%
<b>Total</b>	<b>4756</b>	<b>4545</b>	<b>9301</b>	<b>100,0</b>
Дунд чих, хөхөнцрийн өвчин /H65-H75/	3350	3147	6497	69,9

Дүлийрэл /H90-H91/	567	543	1110	11,9
Гадар чихний өвчнүүд /H60-H62/	517	488	1005	10,8
Чих ба хөхөнцрийн бусад өвчнүүд /H92-H95/	180	247	427	4,6
Дотор чихний өвчнүүд /H80-H83/	142	120	262	2,8

## 4. Diseases and Disorders of the Respiratory System

Illness and disease	2015	2016	Total	%
<b>Total</b>	<b>140881</b>	<b>104597</b>	<b>245478</b>	<b>100,0</b>
Хатгалгаа /J12-J18/	73814	46065	119879	48,8
Цочмог амьсгууртас ба цочмог амьсгуурсанцартас /J20-J21/	21185	16277	37462	15,3
Амьсгууртас уушги тэлэгдэх ба уушгины архаг бөглөрөлтэй бусад өвчнүүд /J40-J44/	11276	9118	20394	8,3
Цочмог тонзиллит /J03/	6167	6033	12200	5,0
Цочмог ларингит ба трахент /J04/	6072	6341	12413	5,1
Гүйлсэн булчирхай ба аденоидын архаг өвчин /J35/	5083	4892	9975	4,1
Багтраа, астма /J45-J46/	3502	2972	6474	2,6
Амьсгалын дээд замын бусад цочмог халдвар /J05-J06/	2763	2790	5553	2,3
Амьсгалын тогтолцооны бусад өвчнүүд /J22, J66, J95-J99/	2727	2060	4787	2,0
Хамрын ба хамрын ангалын бусад эмгэг /J30, J33, J34/	2080	1597	3677	1,5
Томуу /J10-J11/	1763	1747	3510	1,4
Амьсгалын дээд замын бусад өвчнүүд /J36, 38-39/	893	987	1880	0,8
Архаг синүсит /J32/	1014	835	1849	0,8
Амьсгалын доод замын идээрт ба үхжилт оёг /J84-J94/	526	585	1111	0,5
Цочмог назофарингит /J00/	501	651	1152	0,5
Цочмог фарингит /J02/	446	447	893	0,4
Архаг ларингит ба ларинготрахеит /J37/	283	360	643	0,3
Цочмог синүсит /J01/	153	297	450	0,2
Архаг ринит, назофарингит ба фарингит /J31/	306	276	582	0,2
Амьсгуурс тэлэх / бронхиэктази/ /J47/	276	239	515	0,2
Уушги тоосжилт /J60-J65/	51	28	79	0,0

## 5. Diseases and Disorders of the Circulatory System

Illness and disease	2015	2016	Total	%
<b>Total</b>	<b>123334</b>	<b>116131</b>	<b>239465</b>	<b>100,0</b>
Анхдагч даралт ихсэх өвчин /I10/	36936	35934	72870	30,4

Бусад зүрхний ишемийн өвчнүүд /I20, I23-I25/	29986	27380	57366	24,0
Тархи судасны бусад өвчнүүд /I64-I69/	17206	16020	33226	13,9
Даралт ихсэх бусад өвчнүүд /I11-I15/	12055	10745	22800	9,5
Тархинд цус харвалт /I60-I62/	3947	3834	7781	3,2
Шамбарам /I84/	3926	3155	7081	3,0
Зүрхний архаг хэрх өвчин /I05-I09/	3534	3934	7468	3,1
Зүрхний бусад өвчнүүд /I27-I28, I31, I32, I34-I37, I39, I41-I52/	3161	2943	6104	2,5
Зүрхний цочмог хэрх өвчин /I00-I04/	3091	3197	6288	2,6
Тархины шигдээс /I63/	2380	2288	4668	1,9
Атеросклероз /I70/	2285	2313	4598	1,9
Зүрхний булчингийн цочмог шигдээс /I21-I22/	1843	1683	3526	1,5
Зүрхний хэм алдагдал ба дамжуулагчийн эмгэгүүд /I44-I49/	711	501	1212	0,5
Доод мөчний венийн бүдүүрэл /I83/	535	517	1052	0,4
Цусны эргэлтийн системийн бусад өвчнүүд /I85-I87, I95-I99/	504	385	889	0,4
Флевит ба тромбофлевит венийн бөглөрөл ба бүлэн /I80-I82/	358	374	732	0,3
Цочмог зүрхбулчинтас, миокардит /I40/	270	240	510	0,2
Артерийн эмболизм ба тромбоз /I74/	153	155	308	0,1
Уушгины эмболи /I26/	102	94	196	0,1
Артер хялгасан судасны бусад өвчнүүд /I71-I72, I77-I79/	100	175	275	0,1
Захын судасны бусад өвчин /I73/	98	72	170	0,1
Өвөрмөц бус лимфаденит /I88/	59	53	112	0,0
Цочмог перикардит /I30/	46	36	82	0,0
Цочмог ба цочмогдуу эндокардит /I33/	27	38	65	0,0
Тунгалгийн судас ба булчирхайн халдварт бус бусад эмгэг /I89/	15	14	29	0,0
Эндокардит, гэмтсэн хавхлагыг тодорхойлоогүй /I38/	6	51	57	0,0

## 6. Diseases and Disorders of the Digestive System

Illness and disease	2015	2016	Total	%
<b>Total</b>	<b>54157</b>	<b>52807</b>	<b>106964</b>	<b>100</b>
Халдварт бус суулгалт өвчин /K52.9/	15019	14838	29857	27,9
Мухар олгойн өвчин /K35-K38/	12967	13065	26032	24,3
Гастрит ба доуденит /K29/	10612	10289	20901	19,5
Хошноого ба цагаан махны хэсгийн өвчнүүд /K60-K62/	3584	3194	6778	6,3

Ходоод ба гэдэсний шархлаа /K25-K28/	3492	3312	6804	6,4
Амны хөндий шүлсний булчирхай эрүүний бусад өвчнүүд /K09-K14/	2129	1967	4096	3,8
Цавины ивэрхий /K40/	1432	1423	2855	2,7
Гэдэсний бусад өвчнүүд /K55, K58-K59, K63/	766	628	1394	1,3
Гэдэсний саажилт түгжрэл ба ивэрхийгүй гэдэсний түгжрэл /K56/	743	710	1453	1,4
Улаанхоолой, ходоод, дээд гэдэсний бусад өвчнүүд /K22-23, K28, K31/	611	573	1184	1,1
Халдварт бус гэдэстэс ба бүдүүн гэдэстэс /K50-K51/	503	602	1105	1,0
Бусад ивэрхий /K41-K46/	500	436	936	0,9
Хоол шингээх эрхтний бусад өвчнүүд /K90-K93/	457	478	935	0,9
Шүд ба дайвар бүтцийн бусад эмгэг /K00-K01, K03-K08/	364	330	694	0,6
Гэстэс, перитонит /K65-K67/	363	333	696	0,7
Ходоод-улаанхоолой сөөргө /K21/	279	267	546	0,5
Эзофагит /K20/	152	138	290	0,3
Диспепси /биж / /K30/	143	155	298	0,3
Гэдэсний цүлхэнт өвчин /K57/	41	41	82	0,1
Шүд цоорох, кариес /K02/	0	28	28	0,0

## 7. Diseases and Disorders of the Hepatobiliary System And Pancreas

Illness and disease	2015	2016	Total	%
<b>Total</b>	<b>48387</b>	<b>47327</b>	<b>95714</b>	<b>100</b>
Гиваан (холелитиаз) ба цөсхүүдийтэс /K80-K81/	13739	13171	26910	28,1
Өөр бүлэгт ангилаагүй архаг хепатит /K73/	10954	10895	21849	22,8
Элэгний фиброз ба цирроз /K74/	10250	10669	20919	21,9
Цочмог нойр булчирхайтас ба нойр булчирхайн бусад өвчнүүд /K85-K86/	6969	6227	13196	13,8
Элэгний бусад өвчнүүд /K72, K75-K77/	4275	4369	8644	9,0
Цөсний хүүдий ба цөсний замын бусад эмгэг /K82-K83, K87/	1013	962	1975	2,1
Элэгний хордлогот өвчин /K71/	801	625	1426	1,5
Архины шалтгаант элэгний өвчин /K70/	386	409	795	0,8

## 8. Diseases and Disorders of the Musculoskeletal System And Connective Tissue

Illness and disease	2015	2016	Total	%
<b>Total</b>	<b>38759</b>	<b>36071</b>	<b>74830</b>	<b>100</b>
Үрэвсэлт полиартропати, олон үе эмгэг /M05-M14/	8955	7935	16890	22,6
Үетэх, артроз /M15-M19/	11382	11113	22495	30,1
Мөчсийн олдмол гажиг, деформаци /M20-M21/	152	198	350	0,5
Үений бусад өвчнүүд /M00-M03, M22-M25/	1114	1055	2169	2,9
Холбох нэхдэсний тогтолцооны эмгэг /M30-M36/	799	780	1579	2,1

Хүзүүний ба нугалам хоорондох зээрэнцгийн бусад эмгэгүүд /M50-M51/	1869	1854	3723	5,0
Нурууны бусад эмгэгшил /M40-M49, M53/	3368	3679	7047	9,4
Дорсалги /нуруу өвдөх/ /M54/	8442	7065	15507	20,7
Булчингийн эмгэг/M60-M63/	96	98	194	0,3
Үевч ба шөрмөсний эмгэг /M65-M68/	244	206	450	0,6
Бусад зөөлөн нэхдэсний эмгэг /M70-M79/	391	252	643	0,9
Ясны бүтэц ба нягтралын эмгэгүүд /M80-M85/	483	364	847	1,1
Остеомиэлит /M86/	953	984	1937	2,6
Ясны бусад эмгэгүүд /M87-M90/	293	258	551	0,7
Мөгөөрс эмгэг /M91-M94/	58	66	124	0,2
Яс булчингийн тогтолцоо ба холбох нэхдэсийн бусад эмгэг /M95-M99/	160	164	324	0,4

## 9. Diseases and Disorders of the Skin, Subcutaneous Tissue And Breast

Illness and disease	2015	2016	Total	%
<b>Total</b>	<b>20639</b>	<b>19284</b>	<b>39923</b>	<b>100,0</b>
Арьсны бусад идээт өвчнүүд /L02-L08/	6730	5913	12643	31,7
Хайрст үлд /L40-L41/	3037	2795	5832	14,6
Арьстас /L21-L26/	2965	2792	5757	14,4
Атопик дерматит /L20/	1710	1735	3445	8,6
Бусад дерматит /L30/	1091	1033	2124	5,3
Чоно хөрвөс /L50/	1039	980	2019	5,1
Загатнаат маажуур /L28-L29/	921	850	1771	4,4
Батга /L70-L71/	603	620	1223	3,1
Дотуур хэрэглэсэн бодисын шалтгаант дерматит /L27/	346	431	777	1,9
Хавтгай ширшил үлд /L43/	331	335	666	1,7
Халдварын гаралтай байж болзошгүй арьсны өвчин /L42, L51/	330	387	717	1,8
Бусад улайц оёг /L52-L54/	277	154	431	1,1
Арьс ба халимын бусад өвчнүүд /L44-L45, L81, L87-L92, L95-L99/	227	171	398	1,0
Түүхий , Impetigo /L01, L88/	208	246	454	1,1
Цацрагаас үүссэн арьс халимны өвчнүүд /L55-L59/	189	166	355	0,9
Стафилококкт цэврүүт арьсны хамшинж /L00/	150	141	291	0,7
Цэврүүт өвчин /L10-L14/	114	228	342	0,9
Холбогч эдийн өвчин (Коллагенозы) /L93-L94/	88	101	189	0,5

Хөлсний булчирхайн эмгэг /L74-L75/	61	20	81	0,2
Үсний халцрал /L63-L68/	49	40	89	0,2
Хумсны өвчин /L60-L62/	49	31	80	0,2
Арьс цайх өвчин /L80/	60	52	112	0,3
Уутанцарын эмгэг /L72, L73/	35	30	65	0,2
Кератодермия /L82-L86/	29	33	62	0,2

## 10. Diseases and Disorders of the Endocrine, Nutritional And Metabolic System

Illness and disease	2015	2016	Total	%
<b>Total</b>	<b>14985</b>	<b>12543</b>	<b>27528</b>	<b>100,0</b>
Чихэрт шээрэн /E10-E14/	8736	7496	16232	59,0
Бамбай булчирхайн хордлого /E05/	2599	2290	4889	17,8
Дотоод шүүрэл, тэжээлийн ба бодисын солилцооны бусад өвчнүүд /E15-E16, E58-E64, E65, E67-68, E70-E90/	819	657	1476	5,4
Дотоод шүүрлийн бусад найлзуурхайн эмгэгүүд /E20-35/	829	604	1433	5,2
Бамбайхайн бусад өвчнүүд /E03-E04, E06-E07/	695	541	1236	4,5
Таргалалт /E66/	452	173	625	2,3
Тэжээлийн гажиг /E40-E46/	352	270	622	2,3
Аминдэм Д-гийн хомсдол /E55/	286	307	593	2,2
Иод хомсдолтой хамааралтай бамбайн өвчнүүд /E00-E02/	205	187	392	1,4
Бусад аминдэмийн хомсдол /E51-E54, 56/	7	16	23	0,1
Аминдэм А-гийн хомсдол /E50/	5	2	7	0,0

## 11. Diseases and Disorders of the Kidney And Urinary Tract

Illness and disease	2015	2016	Total	%
<b>Total</b>	<b>75049</b>	<b>72577</b>	<b>147626</b>	<b>100,0</b>
Сувганцрын -завсрын эдийн архаг нефрит /N11/	46910	43646	90556	61,3
Сувганцрын завсрын эдийн цочмог нефрит /N10/	11684	13095	24779	16,8
Сальпингит ба оофорит /N70/	4987	4827	9814	6,6
Архаг нефритийн хамшинж /N03/	3207	2919	6126	4,1
Цистит /N30/	1578	1616	3194	2,2
Шээс ялгаруулах тогтолцооны бусад өвчнүүд /N25-N29, N31-N39/	1468	1443	2911	2,0
Шээсний чулуу, гиваан /N20-N23/	1156	892	2048	1,4



Бөөрний архаг дутмагшил /N18/	1114	954	2068	1,4
Бөөрний сувганцар ба завсрын өвчнүүд / архаг бөөртөс нефрит /N12-N16/	1009	1028	2037	1,4
Цочмог ба түргэн даамжрах бөөртөсийн хамшинж /N00-N01/	773	912	1685	1,1
Түүдгэнцрийн бусад өвчнүүд /N02-N08/	533	621	1154	0,8
Бөөрний цочмог дутмагшил /N17/	342	311	653	0,4
Хидроцеле / төмсөг усжих / ба сперматоцеле /N43/	275	295	570	0,4
Бөөрний дутмагшил, тодорхойгүй /N19/	13	18	31	0,0

## 12. Diseases and Disorders of the Male Reproductive System

Illness and disease	2015	2016	Total	%
<b>Total</b>	<b>3510</b>	<b>3139</b>	<b>6649</b>	<b>100,0</b>
Эр бэлэг эрхтний бусад өвчнүүд /N44-N46, N48-N51/	994	857	1851	27,8
Түүрүү булчирхай томрох /N40/	961	849	1810	27,2
Түүрүү булчирхайн бусад өвчнүүд /N41-N42/	780	604	1384	20,8
Тээрхийн арьс хэт их, фимоз ба парафимоз /N47/	775	829	1604	24,1

## 13. Diseases and Disorders of the Female Reproductive System

Illness and disease	2015	2016	Total	%
<b>Total</b>	<b>15982</b>	<b>15144</b>	<b>31126</b>	<b>100,0</b>
Умайн хүзүүг хамраагүй умайн үрэвсэлт өвчин /N71/	3399	3227	6626	21,3
Сарын тэмдэгийн бусад өвчнүүд /N91-N92, N94/	2238	2006	4244	13,6
Эм бэлгийн замын бусад өвчнүүд /N82, N84-N85, N87-N90, N93, N96, N98-N99/	1972	1796	3768	12,1
Өндгөвч, үр дамжуулах хоолой ба өргөн холбоосны үрэвсэлт бус эмгэг /N83/	1971	2069	4040	13,0
Хөхний эмгэгүүд /N60-N64/	935	785	1720	5,5
Цэвэршилт ба цэвэршилт тойрны бусад хямрал /N95/	867	651	1518	4,9
Эм бэлэг эрхтэн унжих /N81/	856	912	1768	5,7
Эм аарцгийн эрхтнүүдийн бусад үрэвсэлт өвчнүүд /N73-N75, N77/	804	722	1526	4,9
Эмэгтэйн үргүйдэл /N97/	726	835	1561	5,0
Эндометриоз /N80/	643	722	1365	4,4
Умайн хүзүүний шархлаа ба шамраас /N86/	604	608	1212	3,9
Үтрээний ба оодойн бусад үрэвсэлт өвчин /N76/	602	492	1094	3,5
Умайн хүзүүний үрэвсэлт өвчин /N72/	365	319	684	2,2

## 14. Pregnancy, Childbirth And Puerperium

Illness and disease	2015	2016	Total	%
---------------------	------	------	-------	---

<b>Total</b>	<b>124634</b>	<b>127630</b>	<b>252264</b>	<b>100</b>
Нэг ургийн хэвийн төрлөг /O80/	54016	56392	110408	43,8
Кесар хагалгаараар нэг ургийг төрүүлэх /O82/	19053	19423	38476	15,3
Эмнэлгийн үр хөндөх /O04/	12858	12455	25313	10,0
Ураг, амнионы хөндий ба төрөхтэй холбоотой эхийн бусад эмгэг /O30-O43, O47-O48/	9292	8809	18101	7,2
Жирэмслэлттэй холбоотой бусад хүндрэлүүд /O20,0-O29,0/	5061	5299	10360	4,1
Жирэмслэлтийн хүндрэл болон зулбан төгссөн жирэмслэлт /O01-O02, O08/	4876	4882	9758	3,9
Жирэмсэн, төрөх, төрсний дараах үеийн хаван, уурагтай шээх, цусны даралтдах эмгэг /O10-O14, O16/	4677	4958	9635	3,8
Аяндаа үр зулбах /O03/	2918	3837	6755	2,7
Төрсний дараа үеийн хүндрэл ба хаа ч ангилаагүй эх барихын бусад оёг /O85-O99/	3180	3047	6227	2,5
Умайн гаднах жирэмсэн /O00/	2584	2471	5055	2,0
Хугацаанаас урьтсан төрөлт /O60/	2259	1932	4191	1,7
Эх барихын бусад аргаар нэг ургийг төрүүлэх /O83/	1365	1548	2913	1,2
Эх барихын хавчуур буюу вакуум соруулаар нэг ургийг төрүүлэх /O81/	665	530	1195	0,5
Бусад үр, хөндөх, зулбах /O05-O06/	483	617	1100	0,4
Ихэр төрүүлэх /O84/	551	523	1074	0,4
Эхэс түрүүлэх, эхсийн түрүү ховхролт ба жирэмсний үед цус алдах /O44-O46/	326	306	632	0,3
Төрөлтийн бусад хүндрэлүүд /O61-O63, O67-O71, O73-O75/	229	260	489	0,2
Үр хөндөлтийн үр дүнгүй үйлдэл /O07/	94	149	243	0,1
Манас таталт O15/	84	115	199	0,1
Төрсний дараа цус алдах /O72/	45	54	99	0,0
Төрөлтийн саатал /O64-O66/	18	23	41	0,0

## 15. Newborn And Other Neonates (Perinatal Period)

<b>Illness and disease</b>	<b>2015</b>	<b>2016</b>	<b>Total</b>	<b>%</b>
<b>Total</b>	<b>10660</b>	<b>11335</b>	<b>21995</b>	<b>100</b>
Перинатал үеийн бусад оёг /P08, P29, P50-P54, O56-P96/	5384	6153	11537	52,5
Зүрхний таславчийн төрөлх гажиг /Q21/	997	771	1768	8,0
Перинатал үед үүссэн амьсгалын замын бусад оёг /P22-P28/	862	849	1711	7,8
Түнхний төрөлх гаж хөгжил /Q65/	533	599	1132	5,1

Цусны эргэлтийн тогтолцооны төрөлхийн гаж хэлбэр /Q20, Q22-Q28/	369	494	863	3,9
Перинатал үеийн өвөрмөц бусад халдвар /P38-P39/	449	290	739	3,4
Сэтэрхий уруул ба тагнай /Q35-Q37/	332	328	660	3,0
Буугаагүй төмсөг /Q53/	307	331	638	2,9
Бусад төрөлхийн гажигууд /Q10-Q18, Q30-Q34, Q80-Q89/	282	278	560	2,5
Хоол боловсруулах тогтолцооны бусад төрөлхийн гажигууд /Q38-Q40, Q42-Q45/	243	302	545	2,5
Яс булчингийн тогтолцооны төрөлхийн гажиг ба бусад хэв гажих /Q67-Q79/	245	261	506	2,3
Жирэмсний тээх хугацаа ба ургийн өсөхтэй холбоотой эмгэгүүд /P05-P07/	147	105	252	1,1
Шээсний замын эрхтний төрөлхийн гажиг /Q60-64/	132	114	246	1,1
Тавхайн төрөлх гаж хөгжил /Q66/	99	114	213	1,0
Умайд эсэл дутах ба төрөхийн бүтэлт /P20-P21/	42	88	130	0,6
Бэлэг эрхтний төрөлхийн бусад гажиг /Q50-52, 54-56/	58	69	127	0,6
Мэдрэлийн тогтолцооны төрөлхийн гажиг /Q00-Q02, Q04, Q06-Q07/	36	55	91	0,4
Өнгөт цогцын хаа ч ангилаагүй гажиг /Q90-Q99/	46	36	82	0,4
Төрөхийн гэмтлүүд /P10-P15/	29	20	49	0,2
Төрөлтийн халдвар ба шимэгчит өвчин /P35-P37/	16	28	44	0,2
Төрөлх тархи усжих /хидроцефали/ /Q03/	12	14	26	0,1
Ураг ба нярайн цус задрах өвчин /P55/	11	12	23	0,1
Нурууны сувгийн дутуу битүүрэл /Q05/	9	12	21	0,1
Нарийн гэдэс төрөлхийн үгүй байх, битрүүэх ба нарийсах Q41/	10	9	19	0,1
Төрөх ба жирэмслэхийн хүндрэлүүд, эхийн хүчин зүйлс нөлөөлсөн ураг, нярай /P00-P04/	10	3	13	0,1

16.Diseases and Disorders of the Blood and Blood Forming Organs and Immunological Disorders

Illness and disease	2015	2016	Total	%
<b>Total</b>	<b>3396</b>	<b>3024</b>	<b>6420</b>	<b>100,0</b>
Төмөр дутлын цусбагадал /D50/	968	895	1863	29,0
Бусад цус багадалтууд /D51-D64/	655	591	1246	19,4
Судас дотор түгмэл бүлэнтэх /ширэггүйдэх хамшинж/ /D65/	212	151	363	5,7
Дэлүүний өвчин /D73/	21	16	37	0,6
Цусны ба цус бүтээх эрхтний бусад өвчнүүд /D66-D77/	1531	1365	2896	45,1

Дархлын механизм хамарсан зарим эмгэг /D80-89/	9	6	15	0,2
--	---	---	----	-----

## 17. Myeloproliferative DDs (Poorly Differentiated Neoplasms)

Illness and disease	2015	2016	Total	%
<b>Total</b>	<b>409</b>	<b>381</b>	<b>790</b>	<b>100</b>
Булчирхай, цус төлжүүлэх ба тэдгээрийн нэхдэсийн бусад өмөн /C88-C90, C96/	40	60	100	12,7
Тодорхойлогдоогүй бусад хавдрууд /D37-D48/	369	321	690	87,3

## 18. Infectious and Parasitic DDs

Illness and disease	2015	2016	Total	%
<b>Total</b>	<b>31984</b>	<b>27341</b>	<b>59325</b>	<b>100</b>
Улаан бурхан /B05/	16016	10222	26238	44,2
Бруцеллөз /A23/	3738	4302	8040	13,6
Амьсгалын эрхтний сүрьеэ/A15-A16/	3034	3620	6654	11,2
Шигеллөз /цусан суулга /A03/	1838	1874	3712	6,3
Салхин цэцэг /B01/	1057	1316	2373	4,0
Бусад вируст өвчнүүд /A81, A87-A89, B03-B04, B07-B09, B25,B27-B34/	1270	950	2220	3,7
Бусад эрхтний сүрьеэ /A17-A19/	1030	903	1933	3,3
Бусад вируст хепатит /B17-B19/	756	971	1727	2,9
Бүслүүр үлд, herpeszoster /B02/	602	515	1117	1,9
Цочмог В хепатит /B16/	463	604	1067	1,8
Бактерын бусад өвчнүүд /A21, A24-A32, A34,A35, A38, A42-A49/	492	454	946	1,6
Халдварт өвчнүүд /A04, A06-A08/	370	411	781	1,3
Бактерийн гаралтай бусад хоолны хордлого /A05/	224	134	358	0,6
Сальмонеллт бусад халдвар /A02/	137	135	272	0,5
Дерматофитоз /B35/	101	140	241	0,4
Халдварын гаралтай гастроэнтерит ба суулга /A09/	105	45	150	0,3
Бусад өнгөц микоз /B36/	75	63	138	0,2
Тархитас, вируст энцефалит /A83-A86/	109	25	134	0,2
Цагаан хорхойтох /B65-B83/	60	74	134	0,2
Улаанууд /B06/	78	55	133	0,2
Цочмог А хепатит /B15/	58	72	130	0,2
Гахай хавдар /B26/	32	46	78	0,1
Херпесвируст ,халдвар /B00/	21	32	53	0,1
Мөөгөнцөртөх, mycoses /B37-B49/	19	23	42	0,1
Цус үжил /A40-A41/	13	21	34	0,1
Гонококкт халдвар/A54/	14	19	33	0,1

Төрөлх тэмбүү /A50/	13	19	32	0,1
Менингоккт халдвар /A39/	13	12	25	0,0
Хүний дархлал хомсдолын вируст өвчин /B20-B24/	9	12	21	0,0
Эрт үеийн тэмбүү /A51/	10	7	17	0,0
Боом /A22/	2	8	10	0,0
Хамуу /B86/	6	4	10	0,0
Бэлгийн замаар дамжих бусад халдварт өвчин /A58, A60-A64/	4	5	9	0,0
Бусад тэмбүү/A52-A53/	0	7	7	0,0
Өнгөштөх, кандидоз /B38-B41/	0	3	3	0,0
Трихомониаз /A59/	1	1	2	0,0
Балнад, иж балнад /A01/	0	1	1	0,0
Тарваган тахал /A20/	0	1	1	0,0
Цочмог полиомиелит /A80/	0	1	1	0,0

## 19. Mental Diseases and Disorders

Illness and disease	2015	2016	Total	%
<b>Total</b>	<b>9815</b>	<b>9133</b>	<b>18948</b>	<b>100</b>
Сэтгэцийн органик ба шинж тэмдгийн эмгэг /F00-F09/	2590	2442	5032	26.6
Шизофрени, шизо хэвшинжит ба дэмийрэх эмгэг /F20-F29/	2365	2290	4655	24.6
Сэтгэл хөдлөлийн эмгэгүүд /F30-F39/	521	523	1044	5.5
Неврозууд ба сэтгэлийн шалтгаант биемахбодын эмгэгүүд /F40-F49/	2954	2706	5660	29.9
Сэтгэцийн хөгжлийн саатал /F70-F79/	669	606	1275	6.7
Сэтгэцийн ба зан үйлийн бусад өвчнүүд /F50-F69, F80-F99/	716	566	1282	6.8

## 20. Alcohol/Drug Use or Induced Mental Disorders

Illness and disease	2015	2016	Total	%
<b>Total</b>	<b>4787</b>	<b>4654</b>	<b>9441</b>	<b>100.0</b>

## 21. Injuries, Poison And Toxic Effect of Drugs

Illness and disease	2015	2016	Total	%
<b>Total</b>	<b>33316</b>	<b>32491</b>	<b>65807</b>	<b>100</b>
Гавал доторх гэмтэл /S06/	6631	6717	13348	20,3

Бусад мөчний ясны гэмтэл /S42, S52, S62, S82, S92, T09, T10, T12,/	5573	5182	10755	16,3
Биеийн өвөрмөц, өвөрмөц бус ба олон бүс хэсгийн бусад бэртлүүд	4760	4912	9672	14,7
Бэртэл, хордлого бусад гадны шалтгаантай хүндрэлийн үлдэц /T90-T98/	3095	2692	5787	8,8
Түлэгдэл ба оглорол /T20-T32/	2838	2859	5697	8,7
Хүзүү, цээж буюу аарцаг ясны хугарал /S12, S22, S32, T08/	1911	2011	3922	6,0
Дунд чөмөг хугарах /S72/	1895	1736	3631	5,5
Гавлын ба нүүрний ясны хугарал /S02/	1772	1790	3562	5,4
Бусад дотоод эрхтнүүдийн бэртэл, биеийн өвөрмөц ба олон бүс хэсэг нялцран бэртэх ба гэмтлийн улмаас тайрагдах /S26-S27, S36-S37, S07-S08, S17-S18, S28	1598	1351	2949	4,5
Биеийн өвөрмөц ба олон бүс хэсэг сунах, тулах мултрах /S03, S13, S23, S33, S43, S53, S63, S73, S83, S93, T03/	1323	1401	2724	4,1
Нүд ба ухархайн гэмтэл /S05/	455	515	970	1,5
Эмийн бус түүхий эдээс голдуу нөлөөт хордлого /T51-T65/	447	400	847	1,3
Гадны хүчний тодорхой бус ба бусад нөлөө /T33-T35, T66-T73, T75-T78/	385	255	640	1,0
Эмт бодис, эм ба биологийн бэлдмэлийн хордлого /T36-T50/	345	369	714	1,1
Биеийн жирийн сүвүүдээр орсон гадны биетийн нөлөөлөл /T15-T19/	168	167	335	0,5
Гэмтлийн эхний зарим хүндрэл ба мэс засал анагаах ажлын дараах хаа ч ангилаагүй хүндрэл /T79-T88/	75	88	163	0,2
Биеийн олон хэсгийг хамарсан хугарал /T02/	40	44	84	0,1
Бүдүүлэг авирлах хамшинж /T74/	5	2	7	0,0

The above analysis assessed whether cases are sufficient. Also age and gender variables are reviewed whether there is a substantial difference. (For age, there applied classification 0-5, 6-18, 19-55, 56 and above.)

## Annex 4.

**Table 10. Procedure cases for ICD 10 codes by MDCs**

## MDC 1. Procedures of the Nervous System

ICD 10 code	ICP 9 code	# of ICD 10 Cases	# of procedure	%
S02	1.24	418	13	3.1
S06	1.24		379	90.7
S06	2.05	695	37	5.3
T90	2.05		11	1.6
D33	2.9		240	34.5
G06	2.9		15	2.2
G91	2.3		52	7.5
G93	2.3		11	1.6
I61	2.9		150	21.6
S02	2.05		128	18.4
D33	3.9	539	16	3.0
G54	3.5		153	28.4
G55	3.5		64	11.9
M48	3.0		11	2.0
S22	3.5		87	16.1
S32	3.5		168	31.2
G50	4.0	204	25	12.3
S54	4.3		95	46.6
S64	4.3		29	14.2
T93	4.49		23	11.3
G50	5.2	28	13	46.4

## MDC 10. Procedures of the Endocrine, Nutritional And Metabolic System

ICD 10 code	ICP 9 code	# of ICD 10 Cases	# of procedure	%
C73	6.4	454	40	8.8
D34	6.4		64	14.1
E04	6.4		46	10.1
E05	6.3		281	61.9
E27	7.22	28	9	32.1

## MDC 2. Procedures of the Eye

ICD 10 code	ICP 9 code	# of ICD 10 Cases	# of procedure	%

D21	8.2	534	10	1.9
H00	8.2		154	28.8
H02	8.7		243	45.5
Q10	8.3		49	9.2
S01	8.3		22	4.1
S05	8.7		10	1.9
H04	9.8	244	224	91.8
H11	10.3	54	22	40.7
S05	10.4		13	24.1
H11	11.32	418	294	70.3
H16	11.52		20	4.8
H59	11.52		18	4.3
S05	11.51		45	10.8
H25	12.5	237	16	6.8
H40	12.5		176	74.3
S05	12.8		17	7.2
H40	13.4	1736	22	1.3
Q12	13.7		14	0.8
S05	13.0		30	1.7
H43	14.7	69	9	13.0
h35	14.7		9	13.0
H50	15.2	140	54	38.6
H05	16.6	344	42	12.2
H16	16.3		13	3.8
H44	16.3		10	2.9
H54	16.3		26	7.6
S05	16.02		222	64.5

## MDC 3. Procedures of the Ear, Nose, Mouth And Throat

ICD 10 code	ICP 9 code	# of ICD 10 Cases	# of procedure	%
H60	18	107	16	15.0
H65	19.5	471	160	34.0
H66	19.5		172	36.5
H72	19.5		54	11.5
H65	20.01	282	120	42.6
H66	20.5		70	24.8
H70	20.4		14	5.0
H71	20.4		10	3.5
H90	20.98		38	13.5
J30	21.88	1098	26	2.4



J31	21.69		25	2.3
J32	21.88		19	1.7
J33	21.88		32	2.9
J34	21.88		690	62.8
J35	21.88		13	1.2
S02	21.88		271	24.7
J32	22.3	277	178	64.3
J33	22		20	7.2
J34	22.53		20	7.2
K10	23.1	178	24	13.5
S01	25.51	82	27	32.9
D11	26.3	102	11	10.8
K11	26.3		16	15.7
L04	27	1577	16	1.0
Q35	27.6		56	3.6
Q36	27.54		68	4.3
Q37	27.5		178	11.3
Q38	27.41		21	1.331642
S01	27.5		83	5.263158
J03	28.2	2028	35	1.725838
J35	28.3		1791	88.31361
J36	28		132	6.5

## MDC 4. Procedures of the Respiratory System

ICD 10 code	ICP 9 code	# of ICD 10 Cases	# of procedure	%
D10	30	127	28	22.0
D14	30		19	15.0
J38	30		60	47.2
A15	32.4	204	98	48.0
A16	32.3		12	5.9
C34	32.3		23	11.3
J85	32.4		14	6.9
J93	32.3		23	11.3
S27	33.43	68	19	27.9
A15	34.51	480	89	18.5
A16	34.51		71	14.8
A18	34.4		10	2.1
J85	34		25	5.2
J86	34		13	2.7
J93	34		39	8.1

S27	34.91		169	35.2
-----	-------	--	-----	------

## MDC 5. Procedures of the Circulatory System

ICD 10 code	ICP 9 code	# of ICD 10 Cases	# of procedure	%
I05	35.2	207	24	11.6
I08	35.21		19	9.2
Q21	35.6		145	70.0
I20	36.07	1027	245	23.9
I21	36.07		514	50.0
I25	36.07		152	14.8
Q21	36.9		38	3.7
Q25	36.99		51	5.0
I31	37.12	94	12	12.8
I44	37.83		16	17.0
I49	37.83		32	34.0
D18	38.6	486	23	4.7
I80	38.5		31	6.4
I83	38.5		387	79.6
I60	39.51	448	225	50.2
I61	39.51		11	2.5
I67	39.79		59	13.2
I74	39.9		23	5.1
I83	39.9		25	5.6
S45	39.31		13	2.9
S55	39.31		10	2.2

## MDC 16. Procedures of the Blood and Blood Forming Organs

ICD 10 code	ICP 9 code	# of ICD 10 Cases	# of procedure	%
A18	40.2	128	38	29.7
D18	40.29		17	13.3
D73	41.41	70	15	21.4

## MDC 6. Procedures of the Digestive System

ICD 10 code	ICP 9 code	# of ICD 10 Cases	# of procedure	%
C15	42	235	56	23.8
C16	42.92		12	5.1
C22	42.33		17	7.2
K22	42.3		15	6.4
C16	43.9	451	340	75.4

K25	43.4		52	11.5
K31	43.41		20	4.4
C16	44.1	149	36	24.2
D00	44.1		15	10.1
K25	44.4		23	15.4
C18	45.3	287	91	31.7
K31	45.3		11	3.8
K56	45.9		55	19.2
Q43	45.9		20	7.0
S36	45.9		10	3.5
C18	46.03	278	13	4.7
K56	46.9		61	21.9
S36	46.7		34	12.2
K63	46.9		39	14.0
Q42	46.1		30	10.8
Q43	46.9		16	5.8
K35	47	4222	4049	95.9
K38	47		156	3.7
K60	48.3	220	12	5.5
K61	48.92		100	45.5
K62	48.92		52	23.6
L02	48		26	11.8
B07	49	2655	13	0.5
I84	49.4		1042	39.2
K60	49.1		546	20.6
K61	49		951	35.8
K62	49		65	2.4
K63	49.6		13	0.5
B67	50.29	570	34	6.0
C22	50.2		429	75.3
D18	50.3		13	2.3
K74	50.2		30	5.3
K75	50.2		18	3.2
S36	50.1		23	4.0
C22	51	4100	32	0.8
C25	51		20	0.5
K80	51.2		3810	92.9
K81	51.2		84	2.0
K82	51.2		52	1.3
K83	51.2		54	1.3
Q44	51.3		17	0.4

C25	52.7	97	42	43.3
K85	52		11	11.3
K86	52		26	26.8
K40	53	871	646	74.2
K41	53		17	2.0
K42	53.4		40	4.6
K43	53.5		74	8.5
K45	53.5		25	2.9
K46	53.5		43	4.9
A18	54.23	455	59	13.0
C16	54.11		24	5.3
C22	54.11		16	3.5
K56	54.11		66	14.5
K65	54.11		51	11.2
K66	54.11		15	3.3
K91	54.11		23	5.1
Q64	54.3		16	3.5
S36	54.11		42	9.2

## MDC 11. Procedures of the Kidney And Urinary Tract

ICD 10 code	ICP 9 code	# of ICD 10 Cases	# of procedure	%
C64	55.5	608	72	11.8
D30	55.5		85	14.0
N11	55.5		21	3.5
N13	55.5		101	16.6
N15	55.5		46	7.6
N18	55.5		26	4.3
N20	55		116	19.1
N28	55		37	6.1
O62	55.9		48	7.9
S37	55.5		18	3.0
N13	56	405	142	35.1
N20	56		214	52.8
N35	56		23	5.7
C67	57.9	215	37	17.2
D30	57.9		31	14.4
N21	57.9		40	18.6
N30	57.9		18	8.4
N32	57.9		21	9.8
N40	57.1		12	5.6
S37	57.81		28	13.0

N35	58	94	37	39.4
N39	58		10	10.6
Q54	58.47		21	22.3
N13	59.8	221	83	37.6
N20	59.8		109	49.3

## MDC 12. Procedures of the Male Reproductive System

ICD 10 code	ICP 9 code	# of ICD 10 Cases	# of procedure	%
N40	60.2	472	452	95.8
N47	61	218	192	88.1
N49	61		14	6.4
N43	62.2	413	21	5.1
N44	62.3		91	22.0
N45	62.2		36	8.7
N49	62.2		34	8.2
Q53	62.5		191	46.2
Q55	62.2		12	2.9
I86	63.1	230	12	5.2
N50	63.2		187	81.3
Q53	63.5		11	4.8
N35	64.2	143	18	12.6
N47	64		66	46.2
N48	64		16	11.2
S31	64.4		14	9.8

## MDC 13. Procedures of the Female Reproductive System

ICD 10 code	ICP 9 code	# of ICD 10 Cases	# of procedure	%
C56	65.6	823	22	2.7
D27	65.2		116	14.1
N70	65.4		24	2.9
N80	65.2		21	2.6
N83	65.2		431	52.4
N97	65.81		131	15.9
O00	65.2		24	2.9
O00	66.6	930	745	80.1
N70	66.4		62	6.7
N83	66.4		18	1.9
N97	66.1		67	7.2
C53	67.2	299	72	24.1
N84	67.3		29	9.7
N87	67.3		16	5.4

O26	67.5		14	4.7
O47	67.5		36	12.0
C53	68.4	1659	85	5.1
C54	68.4		23	1.4
C56	68.4		47	2.8
D25	68.4		980	59.1
D26	68.2		20	1.2
D27	68.4		27	1.6
N70	68.4		46	2.8
N71	68.6		11	0.7
N80	68.4		46	2.8
N81	68.7		34	2.0
N83	68.4		41	2.5
N84	68.4		47	2.8
N85	68.21		54	3.3
N87	68.4		22	1.3
N92	68.4		11	0.7
O00	68.4		71	4.3
O86	68.4		11	0.7
D25	69.59	8439	35	0.4
N71	69.59		34	0.4
N81	69.59		13	0.2
N84	69.59		136	1.6
N85	69.59		79	0.9
N92	69.59		127	1.5
N93	69.59		96	1.1
N95	69.59		13	0.2
O00	69.59		62	0.7
O01	69.59		78	0.9
O02	69.59		1731	20.5
O03	69.59		1063	12.6
O04	69.5		4598	54.5
O07	69.59		30	0.4
O08	69.59		162	1.9
O73	69.59		15	0.2
O85	69.59		16	0.2
O86	69.59		42	0.5
T83	69.97		16	0.2
N32	70.51	387	12	3.1
N39	70.51		127	32.8
N81	70.5		196	50.6

N89	70.3		21	5.4
N75	71.2	326	215	66.0
N81	71.9		50	15.3
N90	71.8		14	4.3
S30	71		12	3.7

## MDC 13. genocological procedures

ICD 10 code	ICP 9 code	# of ICD 10 Cases	# of procedure	%
O04		8565	53	57.0
O82		4376	4376	
O84		97	97	

## MDC 21. Procedures in external organs

ICD 10 code	ICP 9 code	# of ICD 10 Cases	# of procedure	%
C50	85.45	458	202	44.1
N60	85		31	6.8
N61	85		157	34.3
N64	85		34	7.4
Q83	85.2		13	2.8
B01	86.09	4187	17	0.4
C44	86.4		10	0.2
D17	86.2		269	6.4
D20	86.83		12	0.3
D21	86.4		88	2.1
D23	86.4		12	0.3
K10	86.09		10	0.2
K61	86.09		42	1.0
L02	86.09		1735	41.4
L03	86		111	2.7
L04	86.04		399	9.5
L60	86.23		20	0.5
L72	86		23	0.5
M86	86.22		31	0.7
N61	86		20	0.5
Q18	86.04		42	1.0
Q69	86.26		14	0.3
Q70	86.85		12	0.3
S01	86.22		16	0.4
S31	86.2		10	0.2

S51	86.28		28	0.7
S61	86.2		109	2.6
S67	86.61		19	0.5
S68	86.22		42	1.0
S71	86.22		18	0.4
S81	86.22		51	1.2
S91	86.22		17	0.4
T21	86.69		39	0.9
T22	86.69		31	0.7
T23	86.61		29	0.7
T24	86.69		118	2.8
T25	86.69		35	0.8
T29	86.69		271	6.5
T34	86.22		52	1.2
T93	86.22		12	0.3
T95	86.84		159	3.8



Table 11. Inpatient DRGs

Annex 5

MDC	Name of MDC	ICD 10 codes	DRG code	Name of DRG	ICD 10	ICP 9	Classification of procedure	Cost	Cost weight
1	Diseases and Disorders of the Nervous System	A80-A89, A17, A39, C70-C72, D32-D33, G00-G99, I60-I69, S00-S04, S06-S09, R25-R29, D42-D43, Q00-Q07, T90	1010	Менингит, миелингүйтэл	G00-G03, G35-G37		Medical	460,890	0.542
1	Diseases and Disorders of the Nervous System	A80-A89, A17, A39, C70-C72, D32-D33, G00-G99, I60-I69, S00-S04, S06-S09, R25-R29, D42-D43, Q00-Q07, T91	1020	Төв мэдрэлийн системийн эмгэгүүд	G40, G43, G47, G90, G80-G83		Medical	316,444	0.372
1	Diseases and Disorders of the Nervous System	A80-A89, A17, A39, C70-C72, D32-D33, G00-G99, I60-I69, S00-S04, S06-S09, R25-R29, D42-D43, Q00-Q07, T92	1030	Тархины шигдээс, тархины артерийн нарийсал	I63-I66		Medical	374,210	0.440
1	Diseases and Disorders of the Nervous System	A80-A89, A17, A39, C70-C72, D32-D33, G00-G99, I60-I69, S00-S04, S06-S09, R25-R29, D42-D43, Q00-Q07, T93	1500	Миелит энцефалит, гавал нугасны доторх буглаа	G04-G06	2.9	Major	1,078,936	1.270
1	Diseases and Disorders of the Nervous System	A80-A89, A17, A39, C70-C72, D32-D33, G00-G99, I60-I69, S00-S04, S06-S09, R25-R29, D42-D43, Q00-Q07, T94	1040			Medical	1,548,589	1.822	
1	Diseases and Disorders of the Nervous System	A80-A89, A17, A39, C70-C72, D32-D33, G00-G99, I60-I69, S00-S04, S06-S09, R25-	1050	Дистони, гавлын мэдрэлийн эмгэгүүд	G08-G09, G24. G52-G53		Medical	204,480	0.241

		R29, D42-D43, Q00-Q07, T95							
1	Diseases and Disorders of the Nervous System	A80-A89, A17, A39, C70-C72, D32-D33, G00-G99, I60-I69, S00-S04, S06-S09, R25-R29, D42-D43, Q00-Q07, T96	1510	Хордлогот энцефалит, тархи нугасны бусад эмгэг	G92, G96-G99	2.34	Major	889,241	1.046
1	Diseases and Disorders of the Nervous System	A80-A89, A17, A39, C70-C72, D32-D33, G00-G99, I60-I69, S00-S04, S06-S09, R25-R29, D42-D43, Q00-Q07, T97	1060			Medical		176,060	0.207
1	Diseases and Disorders of the Nervous System	A80-A89, A17, A39, C70-C72, D32-D33, G00-G99, I60-I69, S00-S04, S06-S09, R25-R29, D42-D43, Q00-Q07, T98	1520	Тархины хоргүй хавдар	D32-D33	2.3, 2.9	Major	1,726,439	2.032
1	Diseases and Disorders of the Nervous System	A80-A89, A17, A39, C70-C72, D32-D33, G00-G99, I60-I69, S00-S04, S06-S09, R25-R29, D42-D43, Q00-Q07, T99	1070			Medical		667,350	0.785
1	Diseases and Disorders of the Nervous System	A80-A89, A17, A39, C70-C72, D32-D33, G00-G99, I60-I69, S00-S04, S06-S09, R25-R29, D42-D43, Q00-Q07, T100	1080	Хөдөлгөөний эмгэгүүд	G25-G26		Medical	356,656	0.420
1	Diseases and Disorders of the Nervous System	A80-A89, A17, A39, C70-C72, D32-D33, G00-G99, I60-I69, S00-S04, S06-S09, R25-R29, D42-D43, Q00-Q07, T101	1090	Толгойн өвдөлт	G44		Medical	269,061	0.317

1	Diseases and Disorders of the Nervous System	A80-A89, A17, A39, C70-C72, D32-D33, G00-G99, I60-I69, S00-S04, S06-S09, R25-R29, D42-D43, Q00-Q07, T102	1530	Тархины судасны эмгэгүүд	G45-G46	39.51	Major	1,223,403	1.440
1	Diseases and Disorders of the Nervous System	A80-A89, A17, A39, C70-C72, D32-D33, G00-G99, I60-I69, S00-S04, S06-S09, R25-R29, D42-D43, Q00-Q07, T103	1100			Medical	934,400	1.100	
1	Diseases and Disorders of the Nervous System	A80-A89, A17, A39, C70-C72, D32-D33, G00-G99, I60-I69, S00-S04, S06-S09, R25-R29, D42-D43, Q00-Q07, T104	1540	Гурвалсан мэдрэлийн эмгэг	G50	4.01	Major	1,010,860	1.190
1	Diseases and Disorders of the Nervous System	A80-A89, A17, A39, C70-C72, D32-D33, G00-G99, I60-I69, S00-S04, S06-S09, R25-R29, D42-D43, Q00-Q07, T105	1110			Medical	571,571	0.673	
1	Diseases and Disorders of the Nervous System	A80-A89, A17, A39, C70-C72, D32-D33, G00-G99, I60-I69, S00-S04, S06-S09, R25-R29, D42-D43, Q00-Q07, T106	1120	Тусгаар мэдрэлийн эмгэг	G70-G72		Medical	1,202,152	1.415
1	Diseases and Disorders of the Nervous System	A80-A89, A17, A39, C70-C72, D32-D33, G00-G99, I60-I69, S00-S04, S06-S09, R25-R29, D42-D43, Q00-Q07, T107	1550	Тархи усжих	G91	2.3	Major	714,007	0.840
1	Diseases and Disorders of the Nervous System	A80-A89, A17, A39, C70-C72, D32-D33, G00-G99, I60-I69, S00-S04, S06-S09, R25-	1130			Medical	383,392	0.451	

		R29, D42-D43, Q00-Q07, T108							
1	Diseases and Disorders of the Nervous System	A80-A89, A17, A39, C70-C72, D32-D33, G00-G99, I60-I69, S00-S04, S06-S09, R25-R29, D42-D43, Q00-Q07, T109	1140	Нугасны эмгэг	G95		Medical	192,315	0.226
1	Diseases and Disorders of the Nervous System	A80-A89, A17, A39, C70-C72, D32-D33, G00-G99, I60-I69, S00-S04, S06-S09, R25-R29, D42-D43, Q00-Q07, T110	1560	Аалзан хальсан доорх харвалт	I60	2.9, 39.51	Major	2,550,510	3.001
1	Diseases and Disorders of the Nervous System	A80-A89, A17, A39, C70-C72, D32-D33, G00-G99, I60-I69, S00-S04, S06-S09, R25-R29, D42-D43, Q00-Q07, T111	1150			Medical		2,000,013	2.353
1	Diseases and Disorders of the Nervous System	A80-A89, A17, A39, C70-C72, D32-D33, G00-G99, I60-I69, S00-S04, S06-S09, R25-R29, D42-D43, Q00-Q07, T112	1160	Тархины цус харвалт	I61		Medical	832,344	0.979
1	Diseases and Disorders of the Nervous System	A80-A89, A17, A39, C70-C72, D32-D33, G00-G99, I60-I69, S00-S04, S06-S09, R25-R29, D42-D43, Q00-Q07, T113	1570	Тархины судасны бусад эмгэг	I67-I68	39.51, 39.79, 27.52	Major	1,066,515	1.255
1	Diseases and Disorders of the Nervous System	A80-A89, A17, A39, C70-C72, D32-D33, G00-G99, I60-I69, S00-S04, S06-S09, R25-R29, D42-D43, Q00-Q07, T114	1170			Medical		213,782	0.252

1	Diseases and Disorders of the Nervous System	A80-A89, A17, A39, C70-C72, D32-D33, G00-G99, I60-I69, S00-S04, S06-S09, R25-R29, D42-D43, Q00-Q07, T115	1580	Мэдрэлийн тогтолцооны төрөлх гажиг	Q01-Q07	27.52	Minor	69,353	0.082
1	Diseases and Disorders of the Nervous System	A80-A89, A17, A39, C70-C72, D32-D33, G00-G99, I60-I69, S00-S04, S06-S09, R25-R29, D42-D43, Q00-Q07, T116	1180	Нүүрний мэдрэлийн эмгэг	G51		Medical	318,822	0.375
1	Diseases and Disorders of the Nervous System	A80-A89, A17, A39, C70-C72, D32-D33, G00-G99, I60-I69, S00-S04, S06-S09, R25-R29, D42-D43, Q00-Q07, T117	1190	Тархины уйланхай, хаван	G93.0		Medical	314,141	0.370
1	Diseases and Disorders of the Nervous System	A80-A89, A17, A39, C70-C72, D32-D33, G00-G99, I60-I69, S00-S04, S06-S09, R25-R29, D42-D43, Q00-Q07, T118	1590	Мэдрэлийн ёзоор сүлжээний эмгэг	G54-G55	80.51	Major	596,913	0.702
1	Diseases and Disorders of the Nervous System	A80-A89, A17, A39, C70-C72, D32-D33, G00-G99, I60-I69, S00-S04, S06-S09, R25-R29, D42-D43, Q00-Q07, T119	1200			Medical	264,261	0.311	
1	Diseases and Disorders of the Nervous System	A80-A89, A17, A39, C70-C72, D32-D33, G00-G99, I60-I69, S00-S04, S06-S09, R25-R29, D42-D43, Q00-Q07, T120	1210	Тархины бусад эмгэг	G93		Medical	284,244	0.334
1	Diseases and Disorders of the Nervous System	A80-A89, A17, A39, C70-C72, D32-D33, G00-G99, I60-I69, S00-S04, S06-S09, R25-	1220	Тархины судасны өвчний үлдэц	I69		Medical	703,132	0.827

		R29, D42-D43, Q00-Q07, T121							
1	Diseases and Disorders of the Nervous System	A80-A89, A17, A39, C70-C72, D32-D33, G00-G99, I60-I69, S00-S04, S06-S09, R25-R29, D42-D43, Q00-Q07, T122	1230	Толгойн өнгөц гэмтэл	S00		Medical	568,764	0.669
1	Diseases and Disorders of the Nervous System	A80-A89, A17, A39, C70-C72, D32-D33, G00-G99, I60-I69, S00-S04, S06-S09, R25-R29, D42-D43, Q00-Q07, T123	1600	Толгойн ил шарх	S01	76.76, 8.31, 8.81, 86.22	Major	319,437	0.376
1	Diseases and Disorders of the Nervous System	A80-A89, A17, A39, C70-C72, D32-D33, G00-G99, I60-I69, S00-S04, S06-S09, R25-R29, D42-D43, Q00-Q07, T124	1240			Medical	691,695	0.814	
1	Diseases and Disorders of the Nervous System	A80-A89, A17, A39, C70-C72, D32-D33, G00-G99, I60-I69, S00-S04, S06-S09, R25-R29, D42-D43, Q00-Q07, T125	1610			23.1, 25.02, 25.51, 25.9, 27	Minor	119,381	0.140
1	Diseases and Disorders of the Nervous System	A80-A89, A17, A39, C70-C72, D32-D33, G00-G99, I60-I69, S00-S04, S06-S09, R25-R29, D42-D43, Q00-Q07, T126	1620			2.02, 2.05	Major	2,017,900	2.375
1	Diseases and Disorders of the Nervous System	A80-A89, A17, A39, C70-C72, D32-D33, G00-G99, I60-I69, S00-S04, S06-S09, R25-R29, D42-D43, Q00-Q07, T127	1250	Гавлын суурийн хугарал	S02.0-S02.1		Medical	658,414	0.775

1	Diseases and Disorders of the Nervous System	A80-A89, A17, A39, C70-C72, D32-D33, G00-G99, I60-I69, S00-S04, S06-S09, R25-R29, D42-D43, Q00-Q07, T128	1630	Гавлын ба нүүрний ясны хугарал	S02.2-S02.9	21.7, 22.1, 76.76	Major	806,949	0.950
1	Diseases and Disorders of the Nervous System	A80-A89, A17, A39, C70-C72, D32-D33, G00-G99, I60-I69, S00-S04, S06-S09, R25-R29, D42-D43, Q00-Q07, T129	1260			Medical	411,954	0.485	
1	Diseases and Disorders of the Nervous System	A80-A89, A17, A39, C70-C72, D32-D33, G00-G99, I60-I69, S00-S04, S06-S09, R25-R29, D42-D43, Q00-Q07, T130	1640			Minor	255,146	0.300	
1	Diseases and Disorders of the Nervous System	A80-A89, A17, A39, C70-C72, D32-D33, G00-G99, I60-I69, S00-S04, S06-S09, R25-R29, D42-D43, Q00-Q07, T131	1650	Гавал доторх гэмтэл	S06	1.24, 1.31, 2.05	Major	1,981,359	2.332
1	Diseases and Disorders of the Nervous System	A80-A89, A17, A39, C70-C72, D32-D33, G00-G99, I60-I69, S00-S04, S06-S09, R25-R29, D42-D43, Q00-Q07, T132	1270			Medical	486,180	0.572	
1	Diseases and Disorders of the Nervous System	A80-A89, A17, A39, C70-C72, D32-D33, G00-G99, I60-I69, S00-S04, S06-S09, R25-R29, D42-D43, Q00-Q07, T133	1660	Толгойн гэмтлийн үлдэц	T90	2.05	Major	1,505,215	1.771
1	Diseases and Disorders of the Nervous System	A80-A89, A17, A39, C70-C72, D32-D33, G00-G99, I60-I69, S00-S04, S06-S09, R25-	1280			Medical	594,246	0.699	

		R29, D42-D43, Q00-Q07, T134							
2	Diseases and Disorders of the Eye	C69, D31, D32, H00-H59, S05, T15, T26	2010	Нулимсны эрхтэний эмгэг	H04		Medical	197,920	0.233
2	Diseases and Disorders of the Eye	C69, D31, D32, H00-H59, S05, T15, T27	2500			9.11, 9.42, 14.	Minor	282,769	0.333
2	Diseases and Disorders of the Eye	C69, D31, D32, H00-H59, S05, T15, T28	2510	Өвдөг ба халазион	H00-H02	8.07, 8.04, 8, 8.122, 8.11, 8.2, 8.21, 8.22, 8.23, 8.3, 8.4, 8.49, 8.8, 86.2	Major	318,168	0.374
2	Diseases and Disorders of the Eye	C69, D31, D32, H00-H59, S05, T15, T29	2020			Medical	325,801	0.383	
2	Diseases and Disorders of the Eye	C69, D31, D32, H00-H59, S05, T15, T30	2520	Ухархайн эмгэг	H05	16.61, 16.16, 16.31	Major	367,488	0.432
2	Diseases and Disorders of the Eye	C69, D31, D32, H00-H59, S05, T15, T31	2530	Конъюнктивит	H10-H11	11.03	Major	196,687	0.231
2	Diseases and Disorders of the Eye	C69, D31, D32, H00-H59, S05, T15, T32	2540			Minor	231,144	0.272	
2	Diseases and Disorders of the Eye	C69, D31, D32, H00-H59, S05, T15, T33	2030	Склерийн өвчин	H15-H19		Medical	364,229	0.429
2	Diseases and Disorders of the Eye	C69, D31, D32, H00-H59, S05, T15, T34	2550	Хөгшрөлийн цийлт	H25	13.07	Major	238,091	0.280
2	Diseases and Disorders of the Eye	C69, D31, D32, H00-H59, S05, T15, T35	2040			Medical	176,330	0.207	
2	Diseases and Disorders of the Eye	C69, D31, D32, H00-H59, S05, T15, T36	2560	Торлогийн эмгэг	H34-H36	13.3	Major	458,891	0.540
2	Diseases and Disorders of the Eye	C69, D31, D32, H00-H59, S05, T15, T37	2050			Medical	220,441	0.259	
2	Diseases and Disorders of the Eye	C69, D31, D32, H00-H59, S05, T15, T38	2570			14.2, 14.23, 14.24, 14.75	Minor	802,101	0.944
2	Diseases and Disorders of the Eye	C69, D31, D32, H00-H59, S05, T15, T39	2580	Глауком	H40	12.5, 12.54	Major	287,899	0.339



2	Diseases and Disorders of the Eye	C69, D31, D32, H00-H59, S05, T15, T40	2060				Medical	350,772	0.413
2	Diseases and Disorders of the Eye	C69, D31, D32, H00-H59, S05, T15, T41	2070	Харааны мэдрэл ба харааны замын эмгэг	H46-H47		Medical	614,338	0.723
2	Diseases and Disorders of the Eye	C69, D31, D32, H00-H59, S05, T15, T42	2590	Нүдний булчин, аккомодаци ба рефракцийн эмгэг	H49-H52	15.2	Major	2,225,791	2.619
2	Diseases and Disorders of the Eye	C69, D31, D32, H00-H59, S05, T15, T43	2080			Medical	160,344	0.189	
2	Diseases and Disorders of the Eye	C69, D31, D32, H00-H59, S05, T15, T44	2600			14.1, 15, 15.1	Minor	528,193	0.622
2	Diseases and Disorders of the Eye	C69, D31, D32, H00-H59, S05, T15, T45	2610	Нүд ба түүний дайвар эрхтэний эмгэг	H57-H59	11.52, 11.59, 8.8	Major	441,201	0.519
2	Diseases and Disorders of the Eye	C69, D31, D32, H00-H59, S05, T15, T46	2620			11.2, 11.29, 14.1	Minor	509,902	0.600
2	Diseases and Disorders of the Eye	C69, D31, D32, H00-H59, S05, T15, T47	2630	Нүдний төрөлх гажиг	Q10-Q15	8.3, 8.8, 8.9, 13.3, 13.5, 13.7, 13.19, 13.9	Major	729,025	0.858
2	Diseases and Disorders of the Eye	C69, D31, D32, H00-H59, S05, T15, T48	2090			Medical	413,215	0.486	
2	Diseases and Disorders of the Eye	C69, D31, D32, H00-H59, S05, T15, T49	2100	Солонгон бүрхүүл ба сормослог биеийн эмгэг	H21		Medical	141,667	0.167
2	Diseases and Disorders of the Eye	C69, D31, D32, H00-H59, S05, T15, T50	2640	Бусад цийлт	H26	11.51, 13.19, 13.7	Major	765,935	0.901
2	Diseases and Disorders of the Eye	C69, D31, D32, H00-H59, S05, T15, T51	2110			Medical	292,415	0.344	
2	Diseases and Disorders of the Eye	C69, D31, D32, H00-H59, S05, T15, T52	2650	Болрын бусад эмгэг	H27-H28	11.52, 13.19, 13.7, 13.9	Major	625,845	0.736
2	Diseases and Disorders of the Eye	C69, D31, D32, H00-H59, S05, T15, T53	2120			Medical	371,393	0.437	
2	Diseases and Disorders of the Eye	C69, D31, D32, H00-H59, S05, T15, T54	2660			14.1	Minor	236,448	0.278
2	Diseases and Disorders of the Eye	C69, D31, D32, H00-	2670	Нүд ба түүний дайврын өмөн	C69	13.19, 14.2, 14.23, 16.4	Major	775,823	0.913

	Disorders of the Eye	H59, S05, T15, T55							
2	Diseases and Disorders of the Eye	C69, D31, D32, H00-H59, S05, T15, T56	2130				Medical	313,150	0.368
3	Diseases and Disorders of the Ear	C00-C14, D02, D10-D11, H60-H95, K10-K14, R47-R49, T16, Q16-Q18, Q35-Q37	3500	Дунд чихний үрэвсэл	H65-H71, H90	18, 18.09, 19.1, 19.03, 19.3, 19.4, 19.5, 19.9, 19.53, 20.4, 20.42, 20.49, 20.5	Major	666,255	0.784
3	Diseases and Disorders of the Ear	C00-C14, D02, D10-D11, H60-H95, K10-K14, R47-R49, T16, Q16-Q18, Q35-Q38	3010			Medical	410,454	0.483	
3	Diseases and Disorders of the Ear	C00-C14, D02, D10-D11, H60-H95, K10-K14, R47-R49, T16, Q16-Q18, Q35-Q39	3510			Minor	414,777	0.488	
3	Diseases and Disorders of the Ear	C00-C14, D02, D10-D11, H60-H95, K10-K14, R47-R49, T16, Q16-Q18, Q35-Q40	3520	Ам ба залгиурын хоргүй хавдар	D10	28.20, 29.3, 29.5, 30, 30.09	Major	832,760	0.980
3	Diseases and Disorders of the Ear	C00-C14, D02, D10-D11, H60-H95, K10-K14, R47-R49, T16, Q16-Q18, Q35-Q41	3530	Гадна чихний өвчнүүд	H60-H61	86.09	Minor	248,435	0.292
3	Diseases and Disorders of the Ear	C00-C14, D02, D10-D11, H60-H95, K10-K14, R47-R49, T16, Q16-Q18, Q35-Q42	3540	Чих орчмын шүлсний булчирхайн өмөн	C07-C08	26.3	Major	2,548,137	2.998
3	Diseases and Disorders of the Ear	C00-C14, D02, D10-D11, H60-H95, K10-K14, R47-R49, T16, Q16-Q18, Q35-Q43	3020	Ам-залгиурын өмөн	C10		Medical	1,811,955	2.132
3	Diseases and Disorders of the Ear	C00-C14, D02, D10-D11, H60-H95, K10-K14, R47-R49, T16, Q16-Q18, Q35-Q44	3030	Хамар-залгиурын өмөн	C11-C14		Medical	956,796	1.126

3	Diseases and Disorders of the Ear	C00-C14, D02, D10-D11, H60-H95, K10-K14, R47-R49, T16, Q16-Q18, Q35-Q45	3550	Чихний төрөлх гажиг	Q16-Q17	19.5	Major	415,027	0.488
3	Diseases and Disorders of the Ear	C00-C14, D02, D10-D11, H60-H95, K10-K14, R47-R49, T16, Q16-Q18, Q35-Q46	3560	Нүүр ба хүзүүний бусад төрөлх гажиг	Q18	18.29, 19.9	Major	244,708	0.288
3	Diseases and Disorders of the Ear	C00-C14, D02, D10-D11, H60-H95, K10-K14, R47-R49, T16, Q16-Q18, Q35-Q47	3570			86, 86.02, 86.03, 86.04, 86.09, 86.1, 86.3, 86.4	Minor	263,690	0.310
3	Diseases and Disorders of the Ear	C00-C14, D02, D10-D11, H60-H95, K10-K14, R47-R49, T16, Q16-Q18, Q35-Q48	3580	Уруул ба тагнайн сэтэрхий	Q37	27.6, 27.62, 27.9	Major	448,588	0.528
3	Diseases and Disorders of the Ear	C00-C14, D02, D10-D11, H60-H95, K10-K14, R47-R49, T16, Q16-Q18, Q35-Q49	3590			27.5	Minor	326,294	0.384
3	Diseases and Disorders of the Ear	C00-C14, D02, D10-D11, H60-H95, K10-K14, R47-R49, T16, Q16-Q18, Q35-Q50	3600	Сэтэрхий тагнай	Q35	27.6, 27.62, 27.63	Major	324,755	0.382
3	Diseases and Disorders of the Ear	C00-C14, D02, D10-D11, H60-H95, K10-K14, R47-R49, T16, Q16-Q18, Q35-Q51	3610	Сэтэрхий уруул	Q36	27.49	Major	412,481	0.485
3	Diseases and Disorders of the Ear	C00-C14, D02, D10-D11, H60-H95, K10-K14, R47-R49, T16, Q16-Q18, Q35-Q52	3620			27.54	Minor	361,494	0.425
3	Diseases and Disorders of the Ear	C00-C14, D02, D10-D11, H60-H95, K10-K14, R47-R49, T16, Q16-Q18, Q35-Q53	3630	Шүлсний том булчирхайн хоргүй хавдар	D11	26.2, 26.3, 26.32	Major	1,253,857	1.475
3	Diseases and Disorders of the Ear	C00-C14, D02, D10-D11, H60-H95, K10-K14, R47-R49, T16, Q16-Q18, Q35-Q54	3640	Хэнгэргэн хальс, дунд чихний бусад өвчин	H72-74	19.4, 19.5	Major	319,054	0.375

	Disorders of the Ear	K14, R47-R49, T16, Q16-Q18, Q35-Q54							
3	Diseases and Disorders of the Ear	C00-C14, D02, D10-D11, H60-H95, K10-K14, R47-R49, T16, Q16-Q18, Q35-Q55	3650			20.01	Minor	557,908	0.657
3	Diseases and Disorders of the Ear	C00-C14, D02, D10-D11, H60-H95, K10-K14, R47-R49, T16, Q16-Q18, Q35-Q56	3660	Уруул, амны хөндийн өмөн	C00-C06	25.2	Major	2,306,256	2.714
3	Diseases and Disorders of the Ear	C00-C14, D02, D10-D11, H60-H95, K10-K14, R47-R49, T16, Q16-Q18, Q35-Q57	3040			Medical		571,106	0.672
3	Diseases and Disorders of the Ear	C00-C14, D02, D10-D11, H60-H95, K10-K14, R47-R49, T16, Q16-Q18, Q35-Q58	3050	Эрүү, шүлсний булчирхайн бусад өвчин	K10-K11		Medical	201,552	0.237
4	Diseases and Disorders of the Respiratory System	A15-A16, C30-C39, D02, D14-D15, D38, J00-J99, R04-R09, Q30-Q34, T17, T27	4010	Архаг бронхит	J41-J42		Medical	266,723	0.314
4	Diseases and Disorders of the Respiratory System	A15-A16, C30-C39, D02, D14-D15, D38, J00-J99, R04-R09, Q30-Q34, T17, T28	4500	Хамрын ба гүйлсэн булчирхайн буглаа	J34.0-J34.1, J36	21.88, 22.9, 27, 27.9	Major	222,773	0.262
4	Diseases and Disorders of the Respiratory System	A15-A16, C30-C39, D02, D14-D15, D38, J00-J99, R04-R09, Q30-Q34, T17, T29	4020			Medical		245,716	0.289
4	Diseases and Disorders of the Respiratory System	A15-A16, C30-C39, D02, D14-D15, D38, J00-J99, R04-R09, Q30-Q34, T17, T30	4510			21.2, 21.21, 21.29, 22.1, 86.09	Minor		287,630
4	Diseases and Disorders of the Respiratory System	A15-A16, C30-C39, D02, D14-D15, D38, J00-J99, R04-R09,	4520	Амьсгалын дээд замын халдвар, томуу, ринит	J00-J02, J04-J06, J10-J11, J30-J31	21.69	Major	473,986	0.558

		Q30-Q34, T17, T31							
4	Diseases and Disorders of the Respiratory System	A15-A16, C30-C39, D02, D14-D15, D38, J00-J99, R04-R09, Q30-Q34, T17, T32	4030				Medical	288,293	0.339
4	Diseases and Disorders of the Respiratory System	A15-A16, C30-C39, D02, D14-D15, D38, J00-J99, R04-R09, Q30-Q34, T17, T33	4040	Цочмог бронхиолит, бактерит пневмони, багтраа	J21-J22, J15-J17, J45		Medical	270,484	0.318
4	Diseases and Disorders of the Respiratory System	A15-A16, C30-C39, D02, D14-D15, D38, J00-J99, R04-R09, Q30-Q34, T17, T34	4050	Уушигны завсрын эдийн өвчин, буглаа	J84-J85		Medical	442,464	0.521
4	Diseases and Disorders of the Respiratory System	A15-A16, C30-C39, D02, D14-D15, D38, J00-J99, R04-R09, Q30-Q34, T17, T35	4530	Дунд чих ба амьсгалын тогтолцооны хоргүй хавдар	D14-D15	27.49, 30, 30.09	Major	221,323	0.260
4	Diseases and Disorders of the Respiratory System	A15-A16, C30-C39, D02, D14-D15, D38, J00-J99, R04-R09, Q30-Q34, T17, T36	4060			Medical	1,734,592	2.041	
4	Diseases and Disorders of the Respiratory System	A15-A16, C30-C39, D02, D14-D15, D38, J00-J99, R04-R09, Q30-Q34, T17, T37	4540	Дунд чих, амьсгалын ба цээжний хөндийн эрхтэний тодорхойгүй хавдар	D38	34.13	Major	3,765,732	4.431
4	Diseases and Disorders of the Respiratory System	A15-A16, C30-C39, D02, D14-D15, D38, J00-J99, R04-R09, Q30-Q34, T17, T38	4550			Minor	1,158,588	1.363	
4	Diseases and Disorders of the Respiratory System	A15-A16, C30-C39, D02, D14-D15, D38, J00-J99, R04-R09, Q30-Q34, T17, T39	4560	Бактерсудлал ба эдсудлалаар батлагдсан амьсгалын эрхтэний сүрьеэ	A15	32.4	Major	2,103,995	2.476
4	Diseases and Disorders of the Respiratory System	A15-A16, C30-C39, D02, D14-D15, D38, J00-J99, R04-R09, Q30-Q34, T17, T40	4070			Medical	1,897,714	2.233	

4	Diseases and Disorders of the Respiratory System	A15-A16, C30-C39, D02, D14-D15, D38, J00-J99, R04-R09, Q30-Q34, T17, T41	4570	Амьсгалын замд гадны биет орох	T17	31.4, 31.42, 33.2, 33.21, 33.22, 33.24, 42.32	Minor	115,455	0.136
4	Diseases and Disorders of the Respiratory System	A15-A16, C30-C39, D02, D14-D15, D38, J00-J99, R04-R09, Q30-Q34, T17, T42	4580	Бактерсудлал ба эдсудлалаар батлаагүй амьсгалын замын сүрьеэ	A16	34.51	Major	2,894,824	3.406
4	Diseases and Disorders of the Respiratory System	A15-A16, C30-C39, D02, D14-D15, D38, J00-J99, R04-R09, Q30-Q34, T17, T43	4080			Medical	1,440,332	1.695	
4	Diseases and Disorders of the Respiratory System	A15-A16, C30-C39, D02, D14-D15, D38, J00-J99, R04-R09, Q30-Q34, T17, T44	4590			Minor	1,004,838	1.182	
4	Diseases and Disorders of the Respiratory System	A15-A16, C30-C39, D02, D14-D15, D38, J00-J99, R04-R09, Q30-Q34, T17, T45	4090			Цочмог тонзиллит	J03		Medical
4	Diseases and Disorders of the Respiratory System	A15-A16, C30-C39, D02, D14-D15, D38, J00-J99, R04-R09, Q30-Q34, T17, T46	4100	Вирус пневмони	J12		Medical	463,496	0.545
4	Diseases and Disorders of the Respiratory System	A15-A16, C30-C39, D02, D14-D15, D38, J00-J99, R04-R09, Q30-Q34, T17, T47	4110	Цочмог бронхит	J20		Medical	193,748	0.228
4	Diseases and Disorders of the Respiratory System	A15-A16, C30-C39, D02, D14-D15, D38, J00-J99, R04-R09, Q30-Q34, T17, T48	4600	Хамрын ур	J33	21.3, 21.9	Major	588,531	0.693
4	Diseases and Disorders of the Respiratory System	A15-A16, C30-C39, D02, D14-D15, D38, J00-J99, R04-R09, Q30-Q34, T17, T49	4120			Medical	461,018	0.542	
4	Diseases and Disorders of the	A15-A16, C30-C39, D02, D14-D15, D38,	4610			Minor	287,395	0.338	

	Respiratory System	J00-J99, R04-R09, Q30-Q34, T17, T50							
4	Diseases and Disorders of the Respiratory System	A15-A16, C30-C39, D02, D14-D15, D38, J00-J99, R04-R09, Q30-Q34, T17, T51	4130	Мөгөөрсөн хоолойн өмөн	C33		Medical	1,047,130	1.232
4	Diseases and Disorders of the Respiratory System	A15-A16, C30-C39, D02, D14-D15, D38, J00-J99, R04-R09, Q30-Q34, T17, T52	4620	Амьсгуурс ба уушгины өмөн	C34	32.20	Major	4,046,771	4.762
4	Diseases and Disorders of the Respiratory System	A15-A16, C30-C39, D02, D14-D15, D38, J00-J99, R04-R09, Q30-Q34, T17, T53	4140			Medical	353,980	0.417	
4	Diseases and Disorders of the Respiratory System	A15-A16, C30-C39, D02, D14-D15, D38, J00-J99, R04-R09, Q30-Q34, T17, T54	4630	Төвөнхийн өмөн	C32	30.2, 30.3, 31.45,	Major	2,460,228	2.895
4	Diseases and Disorders of the Respiratory System	A15-A16, C30-C39, D02, D14-D15, D38, J00-J99, R04-R09, Q30-Q34, T17, T55	4640			Minor	1,751,625	2.061	
4	Diseases and Disorders of the Respiratory System	A15-A16, C30-C39, D02, D14-D15, D38, J00-J99, R04-R09, Q30-Q34, T17, T56	4650	Амьсгалын ба цээжний хөндийн эрхтэний өмөн	C37-C39	34.1	Major	1,929,429	2.270
4	Diseases and Disorders of the Respiratory System	A15-A16, C30-C39, D02, D14-D15, D38, J00-J99, R04-R09, Q30-Q34, T17, T57	4150	Амьсгалын тогтолцооны төрөлх гажиг	Q31-Q33		Medical	573,176	0.674
4	Diseases and Disorders of the Respiratory System	A15-A16, C30-C39, D02, D14-D15, D38, J00-J99, R04-R09, Q30-Q34, T17, T58	4160	Үүсгэгч нь тодорхойгүй пневмони	J18		Medical	371,540	0.437
4	Diseases and Disorders of the Respiratory System	A15-A16, C30-C39, D02, D14-D15, D38, J00-J99, R04-R09,	4660			34.09	Major	2,043,158	2.404

		Q30-Q34, T17, T59							
4	Diseases and Disorders of the Respiratory System	A15-A16, C30-C39, D02, D14-D15, D38, J00-J99, R04-R09, Q30-Q34, T17, T60	4670	Гүйлсэн булчирхай ба аденоидын архаг өвчин	J35	19.4, 28, 28.2, 28.3	Major	306,692	0.361
4	Diseases and Disorders of the Respiratory System	A15-A16, C30-C39, D02, D14-D15, D38, J00-J99, R04-R09, Q30-Q34, T17, T61	4170			Medical	362,652	0.427	
4	Diseases and Disorders of the Respiratory System	A15-A16, C30-C39, D02, D14-D15, D38, J00-J99, R04-R09, Q30-Q34, T17, T62	4680			20.1, 86.09	Minor	209,816	0.247
4	Diseases and Disorders of the Respiratory System	A15-A16, C30-C39, D02, D14-D15, D38, J00-J99, R04-R09, Q30-Q34, T17, T63	4690	Архаг синусит	J32	22.2	Major	1,704,222	2.005
4	Diseases and Disorders of the Respiratory System	A15-A16, C30-C39, D02, D14-D15, D38, J00-J99, R04-R09, Q30-Q34, T17, T64	4180			Medical	311,316	0.366	
4	Diseases and Disorders of the Respiratory System	A15-A16, C30-C39, D02, D14-D15, D38, J00-J99, R04-R09, Q30-Q34, T17, T65	4700			20.01, 21.2, 22, 22.1, 22.02, 22.1, 22.19	Minor	689,798	0.812
4	Diseases and Disorders of the Respiratory System	A15-A16, C30-C39, D02, D14-D15, D38, J00-J99, R04-R09, Q30-Q34, T17, T66	4710	Хамрын таславчийн эмгэг	J34.2-J34.8	21.88, 22.9,	Major	575,821	0.678
4	Diseases and Disorders of the Respiratory System	A15-A16, C30-C39, D02, D14-D15, D38, J00-J99, R04-R09, Q30-Q34, T17, T67	4190			Medical	646,292	0.761	
4	Diseases and Disorders of the Respiratory System	A15-A16, C30-C39, D02, D14-D15, D38, J00-J99, R04-R09, Q30-Q34, T17, T68	4200	Архаг ларингит, дууны хөвч төвөнхийн эмгэг	J37-J38		Medical	878,114	1.033



4	Diseases and Disorders of the Respiratory System	A15-A16, C30-C39, D02, D14-D15, D38, J00-J99, R04-R09, Q30-Q34, T17, T69	4210	Уушгины архаг бөглөрөлт бусад өвчин	J44		Medical	356,915	0.420
4	Diseases and Disorders of the Respiratory System	A15-A16, C30-C39, D02, D14-D15, D38, J00-J99, R04-R09, Q30-Q34, T17, T70	4220	Амьсгуурс тэлэх [бронхоэктази]	J47		Medical	861,008	1.013
4	Diseases and Disorders of the Respiratory System	A15-A16, C30-C39, D02, D14-D15, D38, J00-J99, R04-R09, Q30-Q34, T17, T71	4720	Хавсын бусад өвчин (плевр)	J90-J94	34.51	Major	316,009	0.372
4	Diseases and Disorders of the Respiratory System	A15-A16, C30-C39, D02, D14-D15, D38, J00-J99, R04-R09, Q30-Q34, T17, T72	4730	Дайвар хөндийн өмөн	C31	22.6, 26.2, 26.3	Major	4,692,007	5.521
4	Diseases and Disorders of the Respiratory System	A15-A16, C30-C39, D02, D14-D15, D38, J00-J99, R04-R09, Q30-Q34, T17, T73	4230			Medical		1,143,288	1.345
5	Diseases and Disorders of the Circulatory System	I00-I52, I70-I99, R00-R03, Q20-Q28	5500	Доод мөчний венийн бүдүүрэл, шамбарам	I83-I84	38.5, 38.94, 49.45, 49.46, 49.47, 49.86	Major	427,794	0.503
5	Diseases and Disorders of the Circulatory System	I00-I52, I70-I99, R00-R03, Q20-Q29	5010			Medical		306,030	0.360
5	Diseases and Disorders of the Circulatory System	I00-I52, I70-I99, R00-R03, Q20-Q30	5510	Зүрхний болон гол судасны төрөлх гажиг	Q21, Q23-Q24	36.99	Major	195,952	0.231
5	Diseases and Disorders of the Circulatory System	I00-I52, I70-I99, R00-R03, Q20-Q31	5020			Medical		242,296	0.285
5	Diseases and Disorders of the Circulatory System	I00-I52, I70-I99, R00-R03, Q20-Q32	5520	Цээжний бах, уушигны эмболи, цочмог перикардит, эндокардит	I20, I26, I30-33	36.07, 88.56	Major	385,502	0.454
5	Diseases and Disorders of the	I00-I52, I70-I99, R00-	5030			Medical		309,663	0.364

	Circulatory System	R03, Q20-Q33							
5	Diseases and Disorders of the Circulatory System	I00-I52, I70-I99, R00-R03, Q20-Q34	5040	Цочмог хэрлэг, хэрлэгийн гаралтай судасны хавхлагын өвчнүүд	I00-I02, I06		Medical	296,708	0.349
5	Diseases and Disorders of the Circulatory System	I00-I52, I70-I99, R00-R03, Q20-Q35	5050	Бөөрний даралт, хоёрдогчоор даралт ихсэх	I12, I15		Medical	245,733	0.289
5	Diseases and Disorders of the Circulatory System	I00-I52, I70-I99, R00-R03, Q20-Q36	5530	Зүрхний хэм алдагдал	I48-I49	37.83	Major	314,005	0.369
5	Diseases and Disorders of the Circulatory System	I00-I52, I70-I99, R00-R03, Q20-Q37	5060				Medical		299,730
5	Diseases and Disorders of the Circulatory System	I00-I52, I70-I99, R00-R03, Q20-Q38	5540	Хэрлэгийн гаралтай хоёр хавтаст хавхлагын өвчнүүд	I05	35.24	Major	7,278,626	8.565
5	Diseases and Disorders of the Circulatory System	I00-I52, I70-I99, R00-R03, Q20-Q39	5070				Medical		287,980
5	Diseases and Disorders of the Circulatory System	I00-I52, I70-I99, R00-R03, Q20-Q40	5550	Венийн бусад өвчин	I86-I87	63.01	Minor	318,210	0.374
5	Diseases and Disorders of the Circulatory System	I00-I52, I70-I99, R00-R03, Q20-Q41	5560	Анхдагч даралт ихсэх өвчин	I10	88.56	Major	136,995	0.161
5	Diseases and Disorders of the Circulatory System	I00-I52, I70-I99, R00-R03, Q20-Q42	5080				Medical		260,246
5	Diseases and Disorders of the Circulatory System	I00-I52, I70-I99, R00-R03, Q20-Q43	5570	Кардиомиопати	I42-I43	88.56	Major	511,686	0.602
5	Diseases and Disorders of the Circulatory System	I00-I52, I70-I99, R00-R03, Q20-Q44	5090				Medical		924,124

5	Diseases and Disorders of the Circulatory System	I00-I52, I70-I99, R00-R03, Q20-Q45	5100	Аневризм	I71-I72		Medical	307,772	0.362
5	Diseases and Disorders of the Circulatory System	I00-I52, I70-I99, R00-R03, Q20-Q46	5580	Артерийн эмболизм ба тромбоз	I74-I77	39.29	Major	881,576	1.037
5	Diseases and Disorders of the Circulatory System	I00-I52, I70-I99, R00-R03, Q20-Q47	5110			Medical	481,070	0.566	
5	Diseases and Disorders of the Circulatory System	I00-I52, I70-I99, R00-R03, Q20-Q48	5120	Венийн эмболи ба тромбоз	I80-I82		Medical	208,186	0.245
5	Diseases and Disorders of the Circulatory System	I00-I52, I70-I99, R00-R03, Q20-Q49	5590	Томоохон артери, вен, захын судасны төрөлх гажиг	Q25-Q27	36.99	Major	106,085	0.125
5	Diseases and Disorders of the Circulatory System	I00-I52, I70-I99, R00-R03, Q20-Q50	5130	Цусны эргэлтийн тогтолцооны бусад төрөлх гажиг	Q28		Medical	329,101	0.387
5	Diseases and Disorders of the Circulatory System	I00-I52, I70-I99, R00-R03, Q20-Q51	5140	Зүрхний даралт ихсэх өвчин	I11		Medical	252,566	0.297
5	Diseases and Disorders of the Circulatory System	I00-I52, I70-I99, R00-R03, Q20-Q52	5600	Олон хавхлагын өвчин	I08	35.22	Major	1,711,069	2.013
5	Diseases and Disorders of the Circulatory System	I00-I52, I70-I99, R00-R03, Q20-Q53	5150			Medical	272,753	0.321	
5	Diseases and Disorders of the Circulatory System	I00-I52, I70-I99, R00-R03, Q20-Q54	5610	Зүрхний цочмог шигдээс	I21	36.07, 88.56	Major	1,293,550	1.522
5	Diseases and Disorders of the Circulatory System	I00-I52, I70-I99, R00-R03, Q20-Q55	5160			Medical	321,290	0.378	
5	Diseases and Disorders of the	I00-I52, I70-I99, R00-R03, Q20-Q56	5620	Зүрхний архаг ишемит өвчин	I25	36.07, 88.56	Major	609,709	0.717

	Circulatory System								
5	Diseases and Disorders of the Circulatory System	I00-I52, I70-I99, R00-R03, Q20-Q57	5170				Medical	345,466	0.407
5	Diseases and Disorders of the Circulatory System	I00-I52, I70-I99, R00-R03, Q20-Q58	5630	Зүрхний дамжуулалтын хямрал	I44-I45	37.79, 37.83	Major	510,185	0.600
6	Diseases and Disorders of the Digestive System	A00-A09, C15-C21, C26, D00-D01, D12-D13, D37, K20-K67, K90-K93, R10-R19, Q38-Q43, Q45.8-Q45.9, T18	6500	Хошноого, шулуун гэдэс, гэдэсний буглаа, цорго	K60-K61, K63	46.1, 47, 46.1, 46.51, 48.60, 48.3, 48.8, 49, 49.01, 49.03, 49.04, 49.1, 49.11, 49.12, 49.5, 49.6, 49.71	Major	346,827	0.408
6	Diseases and Disorders of the Digestive System	A00-A09, C15-C21, C26, D00-D01, D12-D13, D37, K20-K67, K90-K93, R10-R19, Q38-Q43, Q45.8-Q45.9, T19	6010				Medical	250,742	0.295
6	Diseases and Disorders of the Digestive System	A00-A09, C15-C21, C26, D00-D01, D12-D13, D37, K20-K67, K90-K93, R10-R19, Q38-Q43, Q45.8-Q45.9, T20	6510				Minor	312,998	0.368
6	Diseases and Disorders of the Digestive System	A00-A09, C15-C21, C26, D00-D01, D12-D13, D37, K20-K67, K90-K93, R10-R19, Q38-Q43, Q45.8-Q45.9, T21	6520	Уруул, ам, хэлний эмгэг	K12-K14	27.43, 27.9, 25.1	Major	225,361	0.265
6	Diseases and Disorders of the Digestive System	A00-A09, C15-C21, C26, D00-D01, D12-D13, D37, K20-K67, K90-K93, R10-R19, Q38-Q43, Q45.8-Q45.9, T22	6020				Medical	166,386	0.196

6	Diseases and Disorders of the Digestive System	A00-A09, C15-C21, C26, D00-D01, D12-D13, D37, K20-K67, K90-K93, R10-R19, Q38-Q43, Q45.8-Q45.9, T23	6530			25, 25.9	Minor	58,089	0.068
6	Diseases and Disorders of the Digestive System	A00-A09, C15-C21, C26, D00-D01, D12-D13, D37, K20-K67, K90-K93, R10-R19, Q38-Q43, Q45.8-Q45.9, T24	6030	Гэдэсний халдварт өвчин	A00-A09		Medical	429,178	0.505
6	Diseases and Disorders of the Digestive System	A00-A09, C15-C21, C26, D00-D01, D12-D13, D37, K20-K67, K90-K93, R10-R19, Q38-Q43, Q45.8-Q45.9, T25	6040	Хэвлий ба аарцагийн өвдөлт	R10		Medical	96,250	0.113
6	Diseases and Disorders of the Digestive System	A00-A09, C15-C21, C26, D00-D01, D12-D13, D37, K20-K67, K90-K93, R10-R19, Q38-Q43, Q45.8-Q45.9, T26	6540	Хоол боловсруулах замд гадны биет орох	T18	44.9	Major	886,109	1.043
6	Diseases and Disorders of the Digestive System	A00-A09, C15-C21, C26, D00-D01, D12-D13, D37, K20-K67, K90-K93, R10-R19, Q38-Q43, Q45.8-Q45.9, T27	6550			44.13, 42.23, 98	Minor	68,881	0.081
6	Diseases and Disorders of the Digestive System	A00-A09, C15-C21, C26, D00-D01, D12-D13, D37, K20-K67, K90-K93, R10-R19, Q38-Q43, Q45.8-Q45.9, T28	6050	Бактерийн гаралтай хоолны хордлого	A05		Medical	430,247	0.506
6	Diseases and Disorders of the Digestive System	A00-A09, C15-C21, C26, D00-D01, D12-D13, D37, K20-K67, K90-K93, R10-R19,	6560	Ходоодны өмөн	C16	43.3, 43.41, 43.5, 43.6, 43.7, 43.9	Major	3,363,401	3.958

		Q38-Q43, Q45.8-Q45.9, T29							
6	Diseases and Disorders of the Digestive System	A00-A09, C15-C21, C26, D00-D01, D12-D13, D37, K20-K67, K90-K93, R10-R19, Q38-Q43, Q45.8-Q45.9, T30	6060				Medical	549,116	0.646
6	Diseases and Disorders of the Digestive System	A00-A09, C15-C21, C26, D00-D01, D12-D13, D37, K20-K67, K90-K93, R10-R19, Q38-Q43, Q45.8-Q45.9, T31	6570			44.10, 99.25	Minor	738,988	0.870
6	Diseases and Disorders of the Digestive System	A00-A09, C15-C21, C26, D00-D01, D12-D13, D37, K20-K67, K90-K93, R10-R19, Q38-Q43, Q45.8-Q45.9, T32	6580	Бүдүүн гэдэсний өмөн	C18	99.25	Major	1,246,200	1.466
6	Diseases and Disorders of the Digestive System	A00-A09, C15-C21, C26, D00-D01, D12-D13, D37, K20-K67, K90-K93, R10-R19, Q38-Q43, Q45.8-Q45.9, T33	6070	Шулуун гэдэс, хошногны өмөн	C19-C21		Medical	977,764	1.151
6	Diseases and Disorders of the Digestive System	A00-A09, C15-C21, C26, D00-D01, D12-D13, D37, K20-K67, K90-K93, R10-R19, Q38-Q43, Q45.8-Q45.9, T34	6590			27.9	Major	125,247	0.147
6	Diseases and Disorders of the Digestive System	A00-A09, C15-C21, C26, D00-D01, D12-D13, D37, K20-K67, K90-K93, R10-R19, Q38-Q43, Q45.8-Q45.9, T35	6600	Хэл, ам ба залгиурын бусад төрөлх гажиг	Q38	25, 25.09, 25.91, 25.92, 27.2, 27.29, 24.41, 27.91	Minor	63,760	0.075

6	Diseases and Disorders of the Digestive System	A00-A09, C15-C21, C26, D00-D01, D12-D13, D37, K20-K67, K90-K93, R10-R19, Q38-Q43, Q45.8-Q45.9, T36	6610	Нарийн бүдүүн гэдэсний төрөлхийн гажиг	Q41-Q43	45.9, 45.95, 46.1, 46.9, 48.2	Major	733,892	0.864
6	Diseases and Disorders of the Digestive System	A00-A09, C15-C21, C26, D00-D01, D12-D13, D37, K20-K67, K90-K93, R10-R19, Q38-Q43, Q45.8-Q45.9, T37	6620			45.26	Minor	754,584	0.888
6	Diseases and Disorders of the Digestive System	A00-A09, C15-C21, C26, D00-D01, D12-D13, D37, K20-K67, K90-K93, R10-R19, Q38-Q43, Q45.8-Q45.9, T38	6630	Улаан хоолойн өмөн	C15	43.9	Major	5,247,959	6.175
6	Diseases and Disorders of the Digestive System	A00-A09, C15-C21, C26, D00-D01, D12-D13, D37, K20-K67, K90-K93, R10-R19, Q38-Q43, Q45.8-Q45.9, T39	6080			Medical	296,177	0.349	
6	Diseases and Disorders of the Digestive System	A00-A09, C15-C21, C26, D00-D01, D12-D13, D37, K20-K67, K90-K93, R10-R19, Q38-Q43, Q45.8-Q45.9, T40	6640	Эрүү, шүлсний булчирхайн өвчин	K10-K11	76.09, 77	Major	285,072	0.335
6	Diseases and Disorders of the Digestive System	A00-A09, C15-C21, C26, D00-D01, D12-D13, D37, K20-K67, K90-K93, R10-R19, Q38-Q43, Q45.8-Q45.9, T41	6090			Medical	148,310	0.175	
6	Diseases and Disorders of the Digestive System	A00-A09, C15-C21, C26, D00-D01, D12-D13, D37, K20-K67, K90-K93, R10-R19,	6650			24.1, 27, 27.2, 27.9, 76.1	Minor	121,343	0.143

		Q38-Q43, Q45.8-Q45.9, T42							
6	Diseases and Disorders of the Digestive System	A00-A09, C15-C21, C26, D00-D01, D12-D13, D37, K20-K67, K90-K93, R10-R19, Q38-Q43, Q45.8-Q45.9, T43	6660	Саатсан шүд, шүд цоорох	K00-K01	76.09	Major	293,019	0.345
6	Diseases and Disorders of the Digestive System	A00-A09, C15-C21, C26, D00-D01, D12-D13, D37, K20-K67, K90-K93, R10-R19, Q38-Q43, Q45.8-Q45.9, T44	6670			23.1, 24.1	Minor	242,685	0.286
6	Diseases and Disorders of the Digestive System	A00-A09, C15-C21, C26, D00-D01, D12-D13, D37, K20-K67, K90-K93, R10-R19, Q38-Q43, Q45.8-Q45.9, T45	6680	Эрүү нүүрний гажиг, ам орчмын уйланхай	K07-K09		Major	71,554	0.084
6	Diseases and Disorders of the Digestive System	A00-A09, C15-C21, C26, D00-D01, D12-D13, D37, K20-K67, K90-K93, R10-R19, Q38-Q43, Q45.8-Q45.9, T46	6690			27.2, 27.9	Minor	60,389	0.071
6	Diseases and Disorders of the Digestive System	A00-A09, C15-C21, C26, D00-D01, D12-D13, D37, K20-K67, K90-K93, R10-R19, Q38-Q43, Q45.8-Q45.9, T47	6700	Улаан хоолойн эмгэг	K20-K23	42.19	Major	4,048,270	4.764
6	Diseases and Disorders of the Digestive System	A00-A09, C15-C21, C26, D00-D01, D12-D13, D37, K20-K67, K90-K93, R10-R19, Q38-Q43, Q45.8-Q45.9, T48	6100				Medical	1,261,052	1.484



6	Diseases and Disorders of the Digestive System	A00-A09, C15-C21, C26, D00-D01, D12-D13, D37, K20-K67, K90-K93, R10-R19, Q38-Q43, Q45.8-Q45.9, T49	6710			42.23, 42.29	Minor	800,799	0.942
6	Diseases and Disorders of the Digestive System	A00-A09, C15-C21, C26, D00-D01, D12-D13, D37, K20-K67, K90-K93, R10-R19, Q38-Q43, Q45.8-Q45.9, T50	6720	Ходоодны шархлаа	K25	43.7	Major	7,285,399	8.573
6	Diseases and Disorders of the Digestive System	A00-A09, C15-C21, C26, D00-D01, D12-D13, D37, K20-K67, K90-K93, R10-R19, Q38-Q43, Q45.8-Q45.9, T51	6110			Medical		284,782	0.335
6	Diseases and Disorders of the Digestive System	A00-A09, C15-C21, C26, D00-D01, D12-D13, D37, K20-K67, K90-K93, R10-R19, Q38-Q43, Q45.8-Q45.9, T52	6730	Гастрит ба дуоденит	K29		Major	449,687	0.529
6	Diseases and Disorders of the Digestive System	A00-A09, C15-C21, C26, D00-D01, D12-D13, D37, K20-K67, K90-K93, R10-R19, Q38-Q43, Q45.8-Q45.9, T53	6120			Medical	42.85	319,231	0.376
6	Diseases and Disorders of the Digestive System	A00-A09, C15-C21, C26, D00-D01, D12-D13, D37, K20-K67, K90-K93, R10-R19, Q38-Q43, Q45.8-Q45.9, T54	6740	Тархмал перитонит, буглаатай хавсарсан цочмог аппендицит	K35.0-K35.1	47, 47.09, 47.1	Major	386,173	0.454
6	Diseases and Disorders of the Digestive System	A00-A09, C15-C21, C26, D00-D01, D12-D13, D37, K20-K67, K90-K93, R10-R19,	6130			Medical		459,248	0.540

		Q38-Q43, Q45.8-Q45.9, T55							
6	Diseases and Disorders of the Digestive System	A00-A09, C15-C21, C26, D00-D01, D12-D13, D37, K20-K67, K90-K93, R10-R19, Q38-Q43, Q45.8-Q45.9, T56	6750	Цочмог аппендицит	K35.2-K35.9	47	Major	298,323	0.351
6	Diseases and Disorders of the Digestive System	A00-A09, C15-C21, C26, D00-D01, D12-D13, D37, K20-K67, K90-K93, R10-R19, Q38-Q43, Q45.8-Q45.9, T57	6760	Цавины ивэрхий	K40	53, 53.02, 53.03, 53.2	Major	406,447	0.478
6	Diseases and Disorders of the Digestive System	A00-A09, C15-C21, C26, D00-D01, D12-D13, D37, K20-K67, K90-K93, R10-R19, Q38-Q43, Q45.8-Q45.9, T58	6140			Medical	265,597	0.313	
6	Diseases and Disorders of the Digestive System	A00-A09, C15-C21, C26, D00-D01, D12-D13, D37, K20-K67, K90-K93, R10-R19, Q38-Q43, Q45.8-Q45.9, T59	6770	Хүйсний ивэрхий	K42	53, 53.04, 53.59	Major	330,038	0.388
6	Diseases and Disorders of the Digestive System	A00-A09, C15-C21, C26, D00-D01, D12-D13, D37, K20-K67, K90-K93, R10-R19, Q38-Q43, Q45.8-Q45.9, T60	6780	Хэвлийн ивэрхий	K43	53.51	Major	952,481	1.121
6	Diseases and Disorders of the Digestive System	A00-A09, C15-C21, C26, D00-D01, D12-D13, D37, K20-K67, K90-K93, R10-R19, Q38-Q43, Q45.8-Q45.9, T61	6790	Өрцний ивэрхий	K44	44.66	Major	641,934	0.755

6	Diseases and Disorders of the Digestive System	A00-A09, C15-C21, C26, D00-D01, D12-D13, D37, K20-K67, K90-K93, R10-R19, Q38-Q43, Q45.8-Q45.9, T62	6150	Шархлаат колит	K51		Medical	1,013,835	1.193
6	Diseases and Disorders of the Digestive System	A00-A09, C15-C21, C26, D00-D01, D12-D13, D37, K20-K67, K90-K93, R10-R19, Q38-Q43, Q45.8-Q45.9, T63	6800	Бусад халдварт бус гастроэнтерит ба колит	K52		Major	271,821	0.320
6	Diseases and Disorders of the Digestive System	A00-A09, C15-C21, C26, D00-D01, D12-D13, D37, K20-K67, K90-K93, R10-R19, Q38-Q43, Q45.8-Q45.9, T64	6160			Medical	228,323	0.269	
6	Diseases and Disorders of the Digestive System	A00-A09, C15-C21, C26, D00-D01, D12-D13, D37, K20-K67, K90-K93, R10-R19, Q38-Q43, Q45.8-Q45.9, T65	6810	Гэдэсний саажилт түгжрэл ба ивэрхийгүй гэдэсний түгжрэл	K56	45.3, 46.01, 46.8, 46.9, 48.2	Major	4,290,052	5.048
6	Diseases and Disorders of the Digestive System	A00-A09, C15-C21, C26, D00-D01, D12-D13, D37, K20-K67, K90-K93, R10-R19, Q38-Q43, Q45.8-Q45.9, T66	6170			Medical	1,313,606	1.546	
6	Diseases and Disorders of the Digestive System	A00-A09, C15-C21, C26, D00-D01, D12-D13, D37, K20-K67, K90-K93, R10-R19, Q38-Q43, Q45.8-Q45.9, T67	6820			45.21	Minor	232,719	0.274
6	Diseases and Disorders of the Digestive System	A00-A09, C15-C21, C26, D00-D01, D12-D13, D37, K20-K67, K90-K93, R10-R19,	6180	Гэдэс цочролын хамшинж	K58-K59		Medical	326,436	0.384

		Q38-Q43, Q45.8-Q45.9, T68							
6	Diseases and Disorders of the Digestive System	A00-A09, C15-C21, C26, D00-D01, D12-D13, D37, K20-K67, K90-K93, R10-R19, Q38-Q43, Q45.8-Q45.9, T69	6830	Гэдэсний бусад өвчин	K63	46.51, 49.01, 49.6	Major	899,016	1.058
6	Diseases and Disorders of the Digestive System	A00-A09, C15-C21, C26, D00-D01, D12-D13, D37, K20-K67, K90-K93, R10-R19, Q38-Q43, Q45.8-Q45.9, T70	6190			Medical	2,071,951	2.438	
6	Diseases and Disorders of the Digestive System	A00-A09, C15-C21, C26, D00-D01, D12-D13, D37, K20-K67, K90-K93, R10-R19, Q38-Q43, Q45.8-Q45.9, T71	6840	Перитонит	K65	46.9, 54.1, 54.12, 54.19, 54.9	Major	1,886,120	2.219
6	Diseases and Disorders of the Digestive System	A00-A09, C15-C21, C26, D00-D01, D12-D13, D37, K20-K67, K90-K93, R10-R19, Q38-Q43, Q45.8-Q45.9, T72	6200	Хэвлийн гялтангийн бусад эмгэг	K66		Medical	457,409	0.538
7	Diseases and Disorders of the Hepatobiliary System And Pancreas	B15-B19, C22-C25, K70-K77, K80-K87, R17-R18, Q44, Q45.0-Q45.3	7500	Цэсний чулуу, холецистит	K80-K81	51, 51.04, 51.2, 51.22, 51.23	Major	713,312	0.839
7	Diseases and Disorders of the Hepatobiliary System And Pancreas	B15-B19, C22-C25, K70-K77, K80-K87, R17-R18, Q44, Q45.0-Q45.4	7010			Medical	734,254	0.864	
7	Diseases and Disorders of the Hepatobiliary System And	B15-B19, C22-C25, K70-K77, K80-K87, R17-R18, Q44, Q45.0-	7510			Minor	744,120	0.876	

	Pancreas	Q45.5							
7	Diseases and Disorders of the Hepatobiliary System And Pancreas	B15-B19, C22-C25, K70-K77, K80-K87, R17-R18, Q44, Q45.0-Q45.6	7020	Элэгний хордлогот өвчин, реактив гепатит	K70-K71, K75.2-K75.9, K76		Medical	687,380	0.809
7	Diseases and Disorders of the Hepatobiliary System And Pancreas	B15-B19, C22-C25, K70-K77, K80-K87, R17-R18, Q44, Q45.0-Q45.7	7030	Цочмог В гепатит	B16		Medical	1,336,090	1.572
7	Diseases and Disorders of the Hepatobiliary System And Pancreas	B15-B19, C22-C25, K70-K77, K80-K87, R17-R18, Q44, Q45.0-Q45.8	7040	Бусад цочмог вирүст гепатит	B17		Medical	1,557,119	1.832
7	Diseases and Disorders of the Hepatobiliary System And Pancreas	B15-B19, C22-C25, K70-K77, K80-K87, R17-R18, Q44, Q45.0-Q45.9	7050	Архаг вирүст гепатит	B18-B19		Medical	420,768	0.495
7	Diseases and Disorders of the Hepatobiliary System And Pancreas	B15-B19, C22-C25, K70-K77, K80-K87, R17-R18, Q44, Q45.0-Q45.10	7060	Цочмог А гепатит	B51		Medical	1,186,292	1.396
7	Diseases and Disorders of the Hepatobiliary System And Pancreas	B15-B19, C22-C25, K70-K77, K80-K87, R17-R18, Q44, Q45.0-Q45.11	7520	Элэг ба элгэн дэх цөсний сувгийн өмөн	C22	50.1, 50.2, 50.22, 50.3, 50.4, 51.03, 51.2, 52, 52.2, 54.12	Major	2,496,664	2.938
7	Diseases and Disorders of the Hepatobiliary System And Pancreas	B15-B19, C22-C25, K70-K77, K80-K87, R17-R18, Q44, Q45.0-Q45.12	7070			Medical	583,013	0.686	
7	Diseases and Disorders of the	B15-B19, C22-C25, K70-K77, K80-K87,	7530			99.28	Minor	696,818	0.820

	Hepatobiliary System And Pancreas	R17-R18, Q44, Q45.0-Q45.13							
7	Diseases and Disorders of the Hepatobiliary System And Pancreas	B15-B19, C22-C25, K70-K77, K80-K87, R17-R18, Q44, Q45.0-Q45.14	7080	Өөр бүлэгт ангилаагүй архаг хепатит	K73		Medical	266,523	0.314
7	Diseases and Disorders of the Hepatobiliary System And Pancreas	B15-B19, C22-C25, K70-K77, K80-K87, R17-R18, Q44, Q45.0-Q45.15	7090	Элэгний фиброз ба цирроз	K74		Medical	1,708,844	2.011
7	Diseases and Disorders of the Hepatobiliary System And Pancreas	B15-B19, C22-C25, K70-K77, K80-K87, R17-R18, Q44, Q45.0-Q45.16	7540	Элэгний буглаа	K75.0	50	Major	2,380,667	2.801
7	Diseases and Disorders of the Hepatobiliary System And Pancreas	B15-B19, C22-C25, K70-K77, K80-K87, R17-R18, Q44, Q45.0-Q45.17	7100			Medical		203,102	0.239
7	Diseases and Disorders of the Hepatobiliary System And Pancreas	B15-B19, C22-C25, K70-K77, K80-K87, R17-R18, Q44, Q45.0-Q45.18	7110	Цочмог панкреатит	K85		Medical	2,580,623	3.037
7	Diseases and Disorders of the Hepatobiliary System And Pancreas	B15-B19, C22-C25, K70-K77, K80-K87, R17-R18, Q44, Q45.0-Q45.19	7550	Цөсний хүүдийн бусад өвчин	K82	51.23	Major	891,988	1.050
7	Diseases and Disorders of the Hepatobiliary System And Pancreas	B15-B19, C22-C25, K70-K77, K80-K87, R17-R18, Q44, Q45.0-Q45.20	7560	Цөсний замын бусад өвчин	K83	51, 51.2, 51.22, 51.3, 51.9	Major	1,602,008	1.885

7	Diseases and Disorders of the Hepatobiliary System And Pancreas	B15-B19, C22-C25, K70-K77, K80-K87, R17-R18, Q44, Q45.0-Q45.21	7120				Medical	9,734,927	11.455
7	Diseases and Disorders of the Hepatobiliary System And Pancreas	B15-B19, C22-C25, K70-K77, K80-K87, R17-R18, Q44, Q45.0-Q45.22	7130	Нойр булчирхайн бусад өвчин	K86-K87		Medical	248,373	0.292
8	Diseases and Disorders of the Musculoskeletal System And Connective Tissue	C40-C41, D16, M00-M99, Q65-Q79	8500	Ясны бүтэц ба нягтралын эмгэг	M80-M89	78.43, 78.45, 78.47, 78.62, 79.32, 79.35, 79.36, 81.51, 81.52, 77, 77.0, 77.04, 77.07, 78.67, 78.9, 80.1, 84.55, 84.57, 86.63, 77.25, 86.22	Major	1,303,707	1.534
8	Diseases and Disorders of the Musculoskeletal System And Connective Tissue	C40-C41, D16, M00-M99, Q65-Q80	8010			Medical	768,465	0.904	
8	Diseases and Disorders of the Musculoskeletal System And Connective Tissue	C40-C41, D16, M00-M99, Q65-Q81	8510			81.91, 84.01, 86.0, 86.28	Minor	932,494	1.097
8	Diseases and Disorders of the Musculoskeletal System And Connective Tissue	C40-C41, D16, M00-M99, Q65-Q82	8520	Артропати, түнхний артроз, хөлийн хурууны деформаци	M00-M01, M08, M16, M20	81.51, 81.53, 81.54	Major	1,355,848	1.595
8	Diseases and Disorders of the Musculoskeletal System And Connective Tissue	C40-C41, D16, M00-M99, Q65-Q83	8020			Medical	466,459	0.549	

8	Diseases and Disorders of the Musculoskeletal System And Connective Tissue	C40-C41, D16, M00-M99, Q65-Q84	8530			77.53	Minor	1,127,433	1.327
8	Diseases and Disorders of the Musculoskeletal System And Connective Tissue	C40-C41, D16, M00-M99, Q65-Q85	8540	Үений уут ба шөрмөсний эмгэгүүд	M65-M67		Major	564,274	0.664
8	Diseases and Disorders of the Musculoskeletal System And Connective Tissue	C40-C41, D16, M00-M99, Q65-Q86	8030				Medical	1,156,120	1.360
8	Diseases and Disorders of the Musculoskeletal System And Connective Tissue	C40-C41, D16, M00-M99, Q65-Q87	8040	Өөр бүлэгт ангилсан өвчний үеийн остеопати	M90		Medical	833,505	0.981
8	Diseases and Disorders of the Musculoskeletal System And Connective Tissue	C40-C41, D16, M00-M99, Q65-Q88	8550	Яс ба үений мөгөөрсний хоргүй хавдар	D16	77.1, 77.6	Major	1,070,142	1.259
8	Diseases and Disorders of the Musculoskeletal System And Connective Tissue	C40-C41, D16, M00-M99, Q65-Q89	8560			77.45, 77.47	Minor	1,145,318	1.348
8	Diseases and Disorders of the Musculoskeletal System And Connective Tissue	C40-C41, D16, M00-M99, Q65-Q90	8050	Тулай	M10		Medical	604,579	0.711
8	Diseases and Disorders of the Musculoskeletal System And	C40-C41, D16, M00-M99, Q65-Q91	8060	Хэрлэгтөст артрит	M05-M06		Medical	233,064	0.274



	Connective Tissue								
8	Diseases and Disorders of the Musculoskeletal System And Connective Tissue	C40-C41, D16, M00-M99, Q65-Q92	8070	Өвөрмөц артропати	M12-M14		Medical	298,974	0.352
8	Diseases and Disorders of the Musculoskeletal System And Connective Tissue	C40-C41, D16, M00-M99, Q65-Q93	8080	Артроз	M15		Medical	258,506	0.304
8	Diseases and Disorders of the Musculoskeletal System And Connective Tissue	C40-C41, D16, M00-M99, Q65-Q94	8570	Гонартроз [өвдөгний үений артроз]	M17	81.53, 83.4	Major	1,691,522	1.990
8	Diseases and Disorders of the Musculoskeletal System And Connective Tissue	C40-C41, D16, M00-M99, Q65-Q95	8090			Medical	315,297	0.371	
8	Diseases and Disorders of the Musculoskeletal System And Connective Tissue	C40-C41, D16, M00-M99, Q65-Q96	8580			Minor	1,101,895	1.297	
8	Diseases and Disorders of the Musculoskeletal System And Connective Tissue	C40-C41, D16, M00-M99, Q65-Q97	8590	Мөчний бусад олдмол деформаци	M21	78.67	Major	586,670	0.690
8	Diseases and Disorders of the Musculoskeletal System And Connective Tissue	C40-C41, D16, M00-M99, Q65-Q98	8100			Medical	269,671	0.317	
8	Diseases and Disorders of the	C40-C41, D16, M00-	8110	Өвдөгний үений доторх тогтворгүйдэл	M23		Medical	1,215,354	1.430

	Musculoskeletal System And Connective Tissue	M99, Q65-Q99							
8	Diseases and Disorders of the Musculoskeletal System And Connective Tissue	C40-C41, D16, M00-M99, Q65-Q100	8600			80.26	Minor	6,233,139	7.335
8	Diseases and Disorders of the Musculoskeletal System And Connective Tissue	C40-C41, D16, M00-M99, Q65-Q101	8610	Үений бусад эмгэг	M24-M25	81.82	Major	792,655	0.933
8	Diseases and Disorders of the Musculoskeletal System And Connective Tissue	C40-C41, D16, M00-M99, Q65-Q102	8120			Medical	506,874	0.596	
8	Diseases and Disorders of the Musculoskeletal System And Connective Tissue	C40-C41, D16, M00-M99, Q65-Q103	8130	Тогтолцоот улаан чонон яр	M32		Medical	898,068	1.057
8	Diseases and Disorders of the Musculoskeletal System And Connective Tissue	C40-C41, D16, M00-M99, Q65-Q104	8620	Яс ба үений мөгөөрсний өмөн	C40-C41	22.9	Major	623,574	0.734
8	Diseases and Disorders of the Musculoskeletal System And Connective Tissue	C40-C41, D16, M00-M99, Q65-Q105	8140			Medical	746,195	0.878	
8	Diseases and Disorders of the Musculoskeletal System And Connective Tissue	C40-C41, D16, M00-M99, Q65-Q106	8630	Шээс ялгаруулах тогтолцооны төрөлх гажиг	Q60-Q64	54.3, 55.2, 55.9, 59.9	Major	432,310	0.509

8	Diseases and Disorders of the Musculoskeletal System And Connective Tissue	C40-C41, D16, M00-M99, Q65-Q107	8640			27, 57.31	Minor	369,587	0.435
8	Diseases and Disorders of the Musculoskeletal System And Connective Tissue	C40-C41, D16, M00-M99, Q65-Q108	8650	Түнхний төрөлх гаж хөгжил	Q65	77.25, 77.35, 78.65, 79.15, 81.51	Major	1,074,058	1.264
8	Diseases and Disorders of the Musculoskeletal System And Connective Tissue	C40-C41, D16, M00-M99, Q65-Q109	8150			Medical	352,563	0.415	
8	Diseases and Disorders of the Musculoskeletal System And Connective Tissue	C40-C41, D16, M00-M99, Q65-Q110	8660			Minor	432,409	0.509	
8	Diseases and Disorders of the Musculoskeletal System And Connective Tissue	C40-C41, D16, M00-M99, Q65-Q111	8670	Яс-булчингийн бусад төрөлх гаж хөгжил	Q67-Q68	83, 83.02	Major	598,950	0.705
8	Diseases and Disorders of the Musculoskeletal System And Connective Tissue	C40-C41, D16, M00-M99, Q65-Q112	8680	Мөчний төрөлх гажиг	Q69-Q74	77.27, 77.35, 78.67, 79.36, 82.91, 83.71, 86.85	Major	946,740	1.114
8	Diseases and Disorders of the Musculoskeletal System And Connective Tissue	C40-C41, D16, M00-M99, Q65-Q113	8160			Medical	586,561	0.690	
8	Diseases and Disorders of the Musculoskeletal System And	C40-C41, D16, M00-M99, Q65-Q114	8170	Тавхайн төрөлх гаж хөгжил	Q66		Medical	730,703	0.860

	Connective Tissue								
8	Diseases and Disorders of the Musculoskeletal System And Connective Tissue	C40-C41, D16, M00-M99, Q65-Q115	8690	Нурууны остеохондроз, дорсопати	M42-M43	81.05, 84.51	Major	1,745,184	2.054
8	Diseases and Disorders of the Musculoskeletal System And Connective Tissue	C40-C41, D16, M00-M99, Q65-Q116	8180				Medical	551,560	0.649
8	Diseases and Disorders of the Musculoskeletal System And Connective Tissue	C40-C41, D16, M00-M99, Q65-Q117	8700	Спондилопати	M45-M48	3.09	Major	109,731	0.129
8	Diseases and Disorders of the Musculoskeletal System And Connective Tissue	C40-C41, D16, M00-M99, Q65-Q118	8190				Medical	659,039	0.776
8	Diseases and Disorders of the Musculoskeletal System And Connective Tissue	C40-C41, D16, M00-M99, Q65-Q119	8710	Бусад дорсопати	M50-M53	3.09, 80.51	Major	1,505,634	1.772
8	Diseases and Disorders of the Musculoskeletal System And Connective Tissue	C40-C41, D16, M00-M99, Q65-Q120	8200				Medical	355,145	0.418
8	Diseases and Disorders of the Musculoskeletal System And Connective Tissue	C40-C41, D16, M00-M99, Q65-Q121	8720	Дорсалги [нуруу өвдөх]	M54	43.49	Major	548,744	0.646
8	Diseases and Disorders of the	C40-C41, D16, M00-	8210				Medical	272,655	0.321

	Musculoskeletal System And Connective Tissue	M99, Q65-Q122							
8	Diseases and Disorders of the Musculoskeletal System And Connective Tissue	C40-C41, D16, M00-M99, Q65-Q123	8730	Зөөлөн эдийн эмгэгүүд	M70-M79	80.1	Major	56,455	0.066
8	Diseases and Disorders of the Musculoskeletal System And Connective Tissue	C40-C41, D16, M00-M99, Q65-Q124	8740			81.91, 86.09	Minor	113,531	0.134
9	Diseases and Disorders of the Skin	B00-B09, C43-C50, D04-D05, D23-D24, L00-L99, N60-N64, R20-R23, Q80-Q83	9500	Целлулит, лимфаденит	L03-L04	83.19, 86.2, 86.4, 76.09	Major	456,155	0.537
9	Diseases and Disorders of the Skin	B00-B09, C43-C50, D04-D05, D23-D24, L00-L99, N60-N64, R20-R23, Q80-Q84	9010			Medical	342,028	0.402	
9	Diseases and Disorders of the Skin	B00-B09, C43-C50, D04-D05, D23-D24, L00-L99, N60-N64, R20-R23, Q80-Q85	9510			86, 86.03, 86.04, 86.09, 86.1, 86.28, 86.3, 84.01, 86.0, 86.01, 86.11	Minor	156,954	0.185
9	Diseases and Disorders of the Skin	B00-B09, C43-C50, D04-D05, D23-D24, L00-L99, N60-N64, R20-R23, Q80-Q86	9020	Батга, хумсны эмгэг	L70-L73, L60-L62		Medical	173,030	0.204
9	Diseases and Disorders of the Skin	B00-B09, C43-C50, D04-D05, D23-D24, L00-L99, N60-N64, R20-R23, Q80-Q87	9520			86.23	Minor	330,084	0.388
9	Diseases and Disorders of the Skin	B00-B09, C43-C50, D04-D05, D23-D24, L00-L99, N60-N64, R20-R23, Q80-Q88	9530	Бүслүүр үлд, вируст халдвар	B02, B07-B09	49	Major	150,525	0.177

9	Diseases and Disorders of the Skin	B00-B09, C43-C50, D04-D05, D23-D24, L00-L99, N60-N64, R20-R23, Q80-Q89	9030				Medical	411,950	0.485
9	Diseases and Disorders of the Skin	B00-B09, C43-C50, D04-D05, D23-D24, L00-L99, N60-N64, R20-R23, Q80-Q90	9040	Дерматит, загатнаа, чонон хөрвөс	L23-L27, L29-L30, L40, L50		Medical	156,261	0.184
9	Diseases and Disorders of the Skin	B00-B09, C43-C50, D04-D05, D23-D24, L00-L99, N60-N64, R20-R23, Q80-Q91	9050	Салхинцэцэг	B01		Medical	450,792	0.530
9	Diseases and Disorders of the Skin	B00-B09, C43-C50, D04-D05, D23-D24, L00-L99, N60-N64, R20-R23, Q80-Q92	9540	Хэвлийн гялтангийн ба хэвлийн арын зайн өмөн	C48	68.4	Major	3,742,052	4.403
9	Diseases and Disorders of the Skin	B00-B09, C43-C50, D04-D05, D23-D24, L00-L99, N60-N64, R20-R23, Q80-Q93	9060			Medical	280,189	0.330	
9	Diseases and Disorders of the Skin	B00-B09, C43-C50, D04-D05, D23-D24, L00-L99, N60-N64, R20-R23, Q80-Q94	9550	Хөхний хоргүй хавдар	D24	34.1	Major	750,971	0.884
9	Diseases and Disorders of the Skin	B00-B09, C43-C50, D04-D05, D23-D24, L00-L99, N60-N64, R20-R23, Q80-Q95	9070	Арьс ба арьсан доорх эслэгийн бусад өвчин	L80-L98		Medical	159,487	0.188
9	Diseases and Disorders of the Skin	B00-B09, C43-C50, D04-D05, D23-D24, L00-L99, N60-N64, R20-R23, Q80-Q96	9560	Арьсны меланом ба бусад өмөн	C43-C44	86.4, 86.6	Major	1,700,035	2.000
9	Diseases and Disorders of the Skin	B00-B09, C43-C50, D04-D05, D23-D24, L00-L99, N60-N64, R20-R23, Q80-Q97	9080	Атопит дерматит	L20-L21		Medical	379,258	0.446
9	Diseases and Disorders of the	B00-B09, C43-C50, D04-D05, D23-D24,	9570	Арьсны болон хөхний төрөлх гажиг	Q80-Q83	86.03	Minor	192,234	0.226

	Skin	L00-L99, N60-N64, R20-R23, Q80-Q98							
9	Diseases and Disorders of the Skin	B00-B09, C43-C50, D04-D05, D23-D24, L00-L99, N60-N64, R20-R23, Q80-Q99	9580	Хөхний өмөн	C50	84.32, 85.4, 85.41, 85.45, 86.2	Major	1,966,611	2.314
9	Diseases and Disorders of the Skin	B00-B09, C43-C50, D04-D05, D23-D24, L00-L99, N60-N64, R20-R23, Q80-Q100	9090			Medical	1,082,304	1.274	
9	Diseases and Disorders of the Skin	B00-B09, C43-C50, D04-D05, D23-D24, L00-L99, N60-N64, R20-R23, Q80-Q101	9590	Хөхний бусад өвчин	N61-64	83.19, 85, 85.2	Major	282,451	0.332
9	Diseases and Disorders of the Skin	B00-B09, C43-C50, D04-D05, D23-D24, L00-L99, N60-N64, R20-R23, Q80-Q102	9100			Medical	225,163	0.265	
9	Diseases and Disorders of the Skin	B00-B09, C43-C50, D04-D05, D23-D24, L00-L99, N60-N64, R20-R23, Q80-Q103	9600			Minor	146,538	0.172	
10	Diseases and Disorders of the Endocrine	C73-C75, D34-D36, D44, E00-E90	10010	Бамбай булчирхайн эмгэгүүд	E00-E05		Medical	257,570	0.303
10	Diseases and Disorders of the Endocrine	C73-C75, D34-D36, D44, E00-E91	10500	Бамбай булчирхайн өмөн	C73	40.4, 40.42, 6.2, 6.3, 6.4	Major	1,644,027	1.935
10	Diseases and Disorders of the Endocrine	C73-C75, D34-D36, D44, E00-E92	10020			Medical	858,333	1.010	
10	Diseases and Disorders of the Endocrine	C73-C75, D34-D36, D44, E00-E93	10510			Minor	1,408,285	1.657	
10	Diseases and Disorders of the	C73-C75, D34-D36, D44, E00-E94	10520	Бамбай булчирхай болон бусад тодорхойгүй байршилтай хоргүй	D34-36	39.8, 6.2, 6.3, 6.4, 6.5	Major	1,887,536	2.221

	Endocrine			хавдар					
10	Diseases and Disorders of the Endocrine	C73-C75, D34-D36, D44, E00-E95	10030				Medical	937,178	1.103
10	Diseases and Disorders of the Endocrine	C73-C75, D34-D36, D44, E00-E96	10040	Инсулинээс үл хамаарах чихрийн шижин	E11		Medical	312,421	0.368
11	Diseases and Disorders of the Kidney And Urinary Tract	C64-C68, D30, D41, N00-N39, N99, R30-R39, Q60-Q64, T19	11500	Түүдгэнцрийн болон сувганцрын засврын эдийн өвчнүүд	N00-N08, N10-N12	54.98, 68.4	Major	344,399	0.405
11	Diseases and Disorders of the Kidney And Urinary Tract	C64-C68, D30, D41, N00-N39, N99, R30-R39, Q60-Q64, T20	11010			Medical	429,627	0.506	
11	Diseases and Disorders of the Kidney And Urinary Tract	C64-C68, D30, D41, N00-N39, N99, R30-R39, Q60-Q64, T21	10060	Шээс чулуужих өвчин, цистит	N20-N23, N30-N32		Medical	299,421	0.352
11	Diseases and Disorders of the Kidney And Urinary Tract	C64-C68, D30, D41, N00-N39, N99, R30-R39, Q60-Q64, T22	11510	Бөөрний сувганцрын завсрын эдийн бусад өвчин	N14-N16	38.95	Major	2,044,571	2.406
11	Diseases and Disorders of the Kidney And Urinary Tract	C64-C68, D30, D41, N00-N39, N99, R30-R39, Q60-Q64, T23	11020			Medical	450,027	0.530	
11	Diseases and Disorders of the Kidney And Urinary Tract	C64-C68, D30, D41, N00-N39, N99, R30-R39, Q60-Q64, T24	11520	Бөөрний дутмагшил	N18-N19	39.27, 39.42	Major	550,311	0.648
11	Diseases and Disorders of the Kidney And Urinary Tract	C64-C68, D30, D41, N00-N39, N99, R30-R39, Q60-Q64, T25	11030			Medical	350,700	0.413	



11	Diseases and Disorders of the Kidney And Urinary Tract	C64-C68, D30, D41, N00-N39, N99, R30-R39, Q60-Q64, T26	11040	Бөөр ба шээлэйн бусад эмгэг	N25-N29		Medical	913,481	1.075
11	Diseases and Disorders of the Kidney And Urinary Tract	C64-C68, D30, D41, N00-N39, N99, R30-R39, Q60-Q64, T27	11530	Шээс ялгаруулах тогтолцооны бусад эмгэг	N39	70.5, 70.51, 71.79	Major	471,272	0.555
11	Diseases and Disorders of the Kidney And Urinary Tract	C64-C68, D30, D41, N00-N39, N99, R30-R39, Q60-Q64, T28	11050			Medical	934,392	1.100	
11	Diseases and Disorders of the Kidney And Urinary Tract	C64-C68, D30, D41, N00-N39, N99, R30-R39, Q60-Q64, T29	11060	Тэвшинцрийхээс бусад бөөрний өмөн	C64		Medical	218,878	0.258
11	Diseases and Disorders of the Kidney And Urinary Tract	C64-C68, D30, D41, N00-N39, N99, R30-R39, Q60-Q64, T30	11070	Мэс ажилбарын дараах шээс бэлгийн тогтолцооны эмгэг	N99		Medical	378,151	0.445
12	Diseases and Disorders of the Male Reproductive System	C60-C63, D29, D40, N40-N51, Q53-Q55	12500	Эр бэлэг эрхтэний бусад өвчин	N43-N44, N48-49, N50-N51	61.2, 61.3, 62.2, 62.5	Major	290,689	0.342
12	Diseases and Disorders of the Male Reproductive System	C60-C63, D29, D40, N40-N51, Q53-Q56	12010			Medical	197,465	0.232	
12	Diseases and Disorders of the Male Reproductive System	C60-C63, D29, D40, N40-N51, Q53-Q57	12510			61.19, 62.9	Minor	237,537	0.280
12	Diseases and Disorders of the Male Reproductive System	C60-C63, D29, D40, N40-N51, Q53-Q58	12520	Эр бэлэг эрхтэний төрөлх гажиг, манин	Q53-Q56	55.9, 58.47, 61.3, 62.5	Major	442,575	0.521
12	Diseases and Disorders of the	C60-C63, D29, D40,	12020	Түүрүү булчирхай томрох	N40-N42		Medical	960,119	1.130

	Male Reproductive System	N40-N51, Q53-Q59							
12	Diseases and Disorders of the Male Reproductive System	C60-C63, D29, D40, N40-N51, Q53-Q60	12530	Тээрхийн арьс хэт их, фимоз ба парафимоз	N47	61.3, 64, 64.91	Major	224,057	0.264
12	Diseases and Disorders of the Male Reproductive System	C60-C63, D29, D40, N40-N51, Q53-Q61	12030				Medical	117,883	0.139
13	Diseases and Disorders of the Female Reproductive System	C51-C58, D06, D25-D28, D39, N70-N98, Q50-Q52	13500	Эм бэлэг эрхтэний өмөн	C54-C57	65.31, 68.12, 68.40, 54.11, 54.23, 54.40, 54.92, 65.40, 65.51, 65.60, 66.51, 68.30, 68.45, 68.50, 88.76	Major	2,253,369	2.652
13	Diseases and Disorders of the Female Reproductive System	C51-C58, D06, D25-D28, D39, N70-N98, Q50-Q53	13510				99.25, 99.75	Minor	875,350
13	Diseases and Disorders of the Female Reproductive System	C51-C58, D06, D25-D28, D39, N70-N98, Q50-Q54	13520	Сальпингит, оофорит, умайн хүзүүний үрэвсэл	N70-N72	46.9, 65.2, 65.21, 65.29, 65.3, 65.4, 65.41, 65.8, 65.81, 66, 66.02, 66.1, 66.2, 66.3, 66.32, 66.4, 66.5, 66.6, 66.61, 66.9, 66.99, 68.39, 68.4, 68.6, 68.1, 68.12, 68.21	Major	885,710	1.042
13	Diseases and Disorders of the Female Reproductive System	C51-C58, D06, D25-D28, D39, N70-N98, Q50-Q55	13010				Medical	406,411	0.478

13	Diseases and Disorders of the Female Reproductive System	C51-C58, D06, D25-D28, D39, N70-N98, Q50-Q56	13530			69.59, 69.5, 69.9, 97.71	Minor	406,747	0.479
13	Diseases and Disorders of the Female Reproductive System	C51-C58, D06, D25-D28, D39, N70-N98, Q50-Q57	13540	Үтрээ ба оодойн бусад үрэвсэлт өвчин	N75-N76	71.2, 71.22, 71.23, 71.24, 71.9	Major	481,312	0.566
13	Diseases and Disorders of the Female Reproductive System	C51-C58, D06, D25-D28, D39, N70-N98, Q50-Q58	13020			Medical	419,181	0.493	
13	Diseases and Disorders of the Female Reproductive System	C51-C58, D06, D25-D28, D39, N70-N98, Q50-Q59	13550			Minor	411,347	0.484	
13	Diseases and Disorders of the Female Reproductive System	C51-C58, D06, D25-D28, D39, N70-N98, Q50-Q60	13560			Эм бэлэг эрхтэний үрэвсэлт бус өвчнүүд	N80-N81, N83-N95, N97-N98	47, 54.21, 65.1, 65.2, 65.21, 65.23, 65.24, 65.25, 65.29, 65.3, 65.31, 65.39, 65.4, 65.41, 65.49, 65.5, 65.6, 65.71, 65.8, 65.81, 65.9, 66.2, 66.4, 66.5, 66.62, 66.9, 67.38, 68.12, 68.2, 68.19, 68.2, 68.21, 68.29, 68.31, 68.4, 68.59, 68.6, 68.7, 68.71, 70.33, 70.5, 70.51, 71.1.2, 71.5, 71.7 71.9	Major

13	Diseases and Disorders of the Female Reproductive System	C51-C58, D06, D25-D28, D39, N70-N98, Q50-Q61	13030				Medical	415,349	0.489
13	Diseases and Disorders of the Female Reproductive System	C51-C58, D06, D25-D28, D39, N70-N98, Q50-Q62	13570			69.5, 69.59, 69.09, 69.7, 69.9, 69.99, 97.71	Minor	427,444	0.503
13	Diseases and Disorders of the Female Reproductive System	C51-C58, D06, D25-D28, D39, N70-N98, Q50-Q63	13580	Умайн лейомиом	D25	54.1, 65.2, 65.4, 65.41, 66.4, 68.2, 68.29, 68.3, 68.4, 68.40, 68.41, 68.5, 68.6, 68.61, 68.71, 68.9	Major	1,543,165	1.816
13	Diseases and Disorders of the Female Reproductive System	C51-C58, D06, D25-D28, D39, N70-N98, Q50-Q64	13040				Medical	548,613	0.646
13	Diseases and Disorders of the Female Reproductive System	C51-C58, D06, D25-D28, D39, N70-N98, Q50-Q65	13590			69.5, 69.59, 69.7, 97.71	Minor	446,634	0.526
13	Diseases and Disorders of the Female Reproductive System	C51-C58, D06, D25-D28, D39, N70-N98, Q50-Q66	13600			65, 65.21, 65.22, 65.23, 65.31, 65.40, 65.60, 67.39, 68.40, 68.41	Major	1,681,582	1.979
13	Diseases and Disorders of the Female Reproductive System	C51-C58, D06, D25-D28, D39, N70-N98, Q50-Q67	13050	Өндгөвчний ба бусад эм бэлэг эрхтэний хоргүй хавдар	D27-D28		Medical	251,010	0.295
13	Diseases and Disorders of the Female	C51-C58, D06, D25-D28, D39, N70-N98,	13610			86.1	Minor	241,336	0.284

	Reproductive System	Q50-Q68							
13	Diseases and Disorders of the Female Reproductive System	C51-C58, D06, D25-D28, D39, N70-N98, Q50-Q69	13620	Эм бэлэг эрхтэний шинж нь тодорхойгүй хавдар	D39	68.4	Major	1,072,472	1.262
13	Diseases and Disorders of the Female Reproductive System	C51-C58, D06, D25-D28, D39, N70-N98, Q50-Q70	13060	Умайн хүзүүний өмөн	C53		Medical	201,363	0.237
14	Pregnancy	O00-O99	14010	Нэг ургийн хэвийн төрлөг	O80-O81		Medical	531,440	0.625
14	Pregnancy	O00-O100	14500				72.7, 73.01, 73.6	Minor	559,092
14	Pregnancy	O00-O101	14510	Кесарв хагалгаагаар нэг болон ихэр ургийг төрүүлэх	O82, O84	68.3, 74, 74.1	Major	1,525,611	1.795
14	Pregnancy	O00-O102	14020				Medical	785,774	0.925
14	Pregnancy	O00-O103	14520	Төрсний дараах үжил, халдварууд	O85-O86	68.4, 68.41	Major	1,563,070	1.839
14	Pregnancy	O00-O104	14030				Medical	448,196	0.527
14	Pregnancy	O00-O105	14530				69.59	Minor	557,131
14	Pregnancy	O00-O106	14540	Үр хөндөлт, умайн гаднах жирэмсэн ба цулцан хураатай холбоотой хүндрэл	O00-O02, O08	65.2, 65.3, 65.41, 66.4, 66.62, 66.95, 68.2, 68.29, 68.3, 68.4, 74.3	Major	482,063	0.567
14	Pregnancy	O00-O107	14040				Medical	215,025	0.253
14	Pregnancy	O00-O108	14550				33.92, 69.59, 69.5, 73.4	Minor	254,040
14	Pregnancy	O00-O109	14050	Протейнуритэй жирэмсний даралт ихсэх	O13-O14		Medical	720,515	0.848
14	Pregnancy	O00-O110	14060	Жирэмсний үеийн эмгэг, төрөлттэй холбоотой хөхний эмгэг	O20-O22, O91-O92		Medical	273,470	0.322

14	Pregnancy	O00-O111	14070	Төрөх үеийн тусламж үйлчилгээ, төрөхийн дараах хүндрэлүүд	O40-O45, O48-O64, O32-O36, O98-O99		Medical	576,019	0.678
14	Pregnancy	O00-O112	14080	Хүйн ба ургийн дистрессээр хүндэрсэн төрөлт ба төрөлтийн дараа хүндрэл	O68-O69, O90		Medical	324,588	0.382
14	Pregnancy	O00-O113	14560	Өөр бүлэгт ангилсан өвчний үеийн остеопати	M90	69.1, 74	Major	1,135,134	1.336
14	Pregnancy	O00-O114	14090			Medical	755,866	0.889	
14	Pregnancy	O00-O115	14570			73.6, 75.4	Minor	730,500	0.860
14	Pregnancy	O00-O116	14100	Жирэмсэн үеийн шээс - бэлгийн замын халдвар	O23		Medical	455,986	0.537
14	Pregnancy	O00-O117	14110	Ихэр жирэмсэн	O30		Medical	616,683	0.726
14	Pregnancy	O00-O118	14120	Жирэмсэнтэй холбоотой эхийн бусад өвчин	O24-O29		Medical	717,701	0.845
14	Pregnancy	O00-O119	14580	Хуурамч базлалт	O47	66.95, 67.59	Major	524,697	0.617
14	Pregnancy	O00-O120	14130			Medical	523,443	0.616	
14	Pregnancy	O00-O121	14140	Ихэс гадагшлахгүй байх, цус алдалтгүй	O73		Medical	306,677	0.361
14	Pregnancy	O00-O122	14590			69.02, 69.59	Minor	329,934	0.388
14	Pregnancy	O00-O123	14150	Төрлөгийн үед хязан урагдах, бусад гэмтэл	O70-O71		Medical	2,255,288	2.654
14	Pregnancy	O00-O124	14160	Эх барихын бусад аргаар нэг ургийг төрүүлэх	O83		Medical	212,265	0.250
14	Pregnancy	O00-O125	14600			69.02, 69.5, 69.59	Minor	315,704	0.371
14	Pregnancy	O00-O126	14610	Эмнэлгийн үр хөндөлт	O04	74.91	Major	471,255	0.555
14	Pregnancy	O00-O127	14170			Medical	271,735	0.320	
14	Pregnancy	O00-O128	14620			69.02, 69.5, 69.51, 69.59, 73.4	Minor	272,690	0.321
14	Pregnancy	O00-O129	14180	Жирэмсэн, төрөлт ба төрсний дараах үеийн протейнури ба даралт ихсэх эмгэг	O10-O11		Medical	262,259	0.309

14	Pregnancy	O00-O130	14190	Зулбалт	O05-O06		Medical	258,995	0.305
14	Pregnancy	O00-O131	14200	Үр хөндөлтийн үр дүнгүй үйлдэл	O07		Medical	197,874	0.233
14	Pregnancy	O00-O132	14630			69.59	Minor	439,275	0.517
15	Disorders originated in the Perinatal Period	P00-P96, Q84-Q89	15010	Төрөхийн гэмтэл, перинаталь үед уушгинаас цус алдах	P10-P15, P26		Medical	267,495	0.315
15	Disorders originated in the Perinatal Period	P00-P96, Q84-Q90	15020		P52, P57-P58		Medical	927,103	1.091
15	Disorders originated in the Perinatal Period	P00-P96, Q84-Q91	15030	Ураг ба нярайн бусад эмгэгүүд	P53-P55, P59-P61, P70-P71, P80-P83, P92-P96		Medical	292,507	0.344
15	Disorders originated in the Perinatal Period	P00-P96, Q84-Q92	15040	Төрөх үеийн бүтэлт, дистресс	P20-P22		Medical	5,129,205	6.036
15	Disorders originated in the Perinatal Period	P00-P96, Q84-Q93	15050	Дутуу тээлт болон ураг бага жинтэй төрснөөс улбаалсан өөр бүлэгт ангилаагүй эмгэг	P07		Medical	2,939,128	3.459
15	Disorders originated in the Perinatal Period	P00-P96, Q84-Q94	15060	Нярайн хахах хамшинж	P24		Medical	159,891	0.188
15	Disorders originated in the Perinatal Period	P00-P96, Q84-Q95	15500			34.91	Minor	1,141,158	1.343
15	Disorders originated in the Perinatal Period	P00-P96, Q84-Q96	15070	Перинаталь үед үүссэн амьсгалын ба зүрх судасны эмгэг	P27-P29		Medical	862,535	1.015
15	Disorders originated in the Perinatal Period	P00-P96, Q84-Q97	15510			86.09	Minor	404,531	0.476
15	Disorders originated in the Perinatal Period	P00-P96, Q84-Q98	15080	Төрөлх вируст халдвар	P35		Medical	1,055,020	1.241

15	Disorders originated in the Perinatal Period	P00-P96, Q84-Q99	15520			85	Major	304,527	0.358
15	Disorders originated in the Perinatal Period	P00-P96, Q84-Q100	15090	Нярайн бактерт үжил ба халдварууд	P36-P39.3		Medical	488,350	0.575
15	Disorders originated in the Perinatal Period	P00-P96, Q84-Q101	15530			86.09	Minor	240,694	0.283
15	Disorders originated in the Perinatal Period	P00-P96, Q84-Q102	15100	Нярайн арьсны халдвар	P39.4-P39.9		Medical	418,609	0.493
15	Disorders originated in the Perinatal Period	P00-P96, Q84-Q103	15540	Ураг ба нярайн хоол боловсруулах тогтолцооны хямрал	P76-P78	46.9, 48.26	Major	2,217,116	2.609
15	Disorders originated in the Perinatal Period	P00-P96, Q84-Q104	15110			Medical	439,397	0.517	
15	Disorders originated in the Perinatal Period	P00-P96, Q84-Q105	15120	Нярайн тархины хямрал	P91		Medical	275,390	0.324
16	Diseases and Disorders of the Blood and Blood Forming Organs and Immunological Disorders	C81-C97, D47, D50-D89, Q90-Q99	16010	Цус багадалт ба цус бүлэгнэлтийн хямрал	D50-D53, D60-69		Medical	789,051	0.928
16	Diseases and Disorders of the Blood and Blood Forming Organs and Immunological Disorders	C81-C97, D47, D50-D89, Q90-Q100	16020	Хожкины өвчин	C81		Medical	85,404	0.100
16	Diseases and Disorders of the Blood and Blood Forming Organs and Immunological Disorders	C81-C97, D47, D50-D89, Q90-Q101	16030	Хожкины бус уутанцрын ба нэвчмэл лимфом	C82-C83		Medical	690,125	0.812



	Disorders								
16	Diseases and Disorders of the Blood and Blood Forming Organs and Immunological Disorders	C81-C97, D47, D50-D89, Q90-Q102	16040	Миелом ба плазмоцитын өмөн	C91-C95		Medical	1,523,689	1.793
16	Diseases and Disorders of the Blood and Blood Forming Organs and Immunological Disorders	C81-C97, D47, D50-D89, Q90-Q103	16050	Цусархаг тууралт ба цус алдлын бусад эмгэг	D69		Medical	239,265	0.282
16	Diseases and Disorders of the Blood and Blood Forming Organs and Immunological Disorders	C81-C97, D47, D50-D89, Q90-Q104	16060	Ретикулохистоцит тогтолцооны ба тунгалаг торлогыг хамарсан зарим өвчин	D76		Medical	176,026	0.207
17	Poorly Differentiated Neoplasms	C76-C80, C97, D03, D07, D09, D17-D22, D45-D46, D48	17500	Өөхөн эд, холбох ба бусад зөөлөн эдийн хоргүй хавдар	D17-D21	8.2, 8.22, 8.23, 8.25, 8.9, 10.3, 82.22, 83.19, 86.2, 86.20, 86.9, 40.29, 40.30,	Major	413,255	0.486
17	Poorly Differentiated Neoplasms	C76-C80, C97, D03, D07, D09, D17-D22, D45-D46, D49	17010				Medical	203,766	0.240
17	Poorly Differentiated Neoplasms	C76-C80, C97, D03, D07, D09, D17-D22, D45-D46, D50	17510			83.49, 86, 86.0, 86.01, 86.04, 86.09, 86.3, 88	Minor	285,303	0.336
17	Poorly Differentiated Neoplasms	C76-C80, C97, D03, D07, D09, D17-D22, D45-D46, D51	17520	Полицитеми, чөмөгний дисплазийн хамжинжүүд	D45-D46	40.3	Major	679,047	0.799
18	Infectious and Parasitic DDs	A18-A38, A40-A99, B20-B99	18010	Бактерт бусад өвчин	A32-A38, A75-A79		Medical	525,096	0.618
18	Infectious and	A18-A38, A40-A99,	18020	ХДВ-г тодорхойгүй өвчин	B24		Medical	2,425,437	2.854

	Parasitic DDs	B20-B100							
18	Infectious and Parasitic DDs	A18-A38, A40-A99, B20-B101	18500	Бусад эрхтэний сүрьеэ	A18	81.07, 81.11, 83.9	Major	1,414,148	1.664
18	Infectious and Parasitic DDs	A18-A38, A40-A99, B20-B102	18030				Medical	381,425	0.449
18	Infectious and Parasitic DDs	A18-A38, A40-A99, B20-B103	18510	Түгмэл сүрьеэ	A19	32.3, 34.51	Major	2,489,961	2.930
18	Infectious and Parasitic DDs	A18-A38, A40-A99, B20-B104	18040				Medical	2,362,620	2.780
18	Infectious and Parasitic DDs	A18-A38, A40-A99, B20-B105	18520				Minor	1,333,806	1.570
18	Infectious and Parasitic DDs	A18-A38, A40-A99, B20-B106	18050	Ёлом	A46		Medical	620,366	0.730
18	Infectious and Parasitic DDs	A18-A38, A40-A99, B20-B107	18060	Тодорхойгүй байрлалын вирус т халдвар	B34		Medical	528,691	0.622
18	Infectious and Parasitic DDs	A18-A38, A40-A99, B20-B108	18530	Эхинококкоз [бэтэг]	B67	49, 50.29	Major	650,326	0.765
18	Infectious and Parasitic DDs	A18-A38, A40-A99, B20-B109	18070	Вирус энцефалит	A84-A85		Medical	536,622	0.631
18	Infectious and Parasitic DDs	A18-A38, A40-A99, B20-B110	18080	Бруцеллёз	A23		Medical	661,128	0.778
18	Infectious and Parasitic DDs	A18-A38, A40-A99, B20-B111	18090	Халдварт ба шимэгчит өвчинтэй хавсарсан хүний дархлал хомсдолын вирус [ХДВ] өвчин	B20		Medical	845,459	0.995
18	Infectious and Parasitic DDs	A18-A38, A40-A99, B20-B112	18100	Мөөгөнцөртөх, үлд, кандидоз	B35-B37		Medical	210,642	0.248
19	Mental Diseases and Disorders	F00-F09, F20-F99, R40-R46	19010	Шизофрени, оюуны хөнгөн хомсдол	F20, F23, F70		Medical	1,743,557	2.052
19	Mental Diseases and Disorders	F00-F09, F20-F99, R40-R47	19020	Биеийн хэлбэрийн ба неврозын эмгэгүүд	F45, F48		Medical	573,452	0.675
19	Mental Diseases	F00-F09, F20-F99,	19030	Шизофренийн хэвшинжит эмгэг	F21-F22		Medical	624,375	0.735

	and Disorders	R40-R48							
19	Mental Diseases and Disorders	F00-F09, F20-F99, R40-R49	19040	Нойрны органик бус эмгэгүүд ба оюуны хүндэвтэр хомсдол	F51, F71		Medical	2,090,649	2.460
19	Mental Diseases and Disorders	F00-F09, F20-F99, R40-R50	19050	Хүүхэд ба өсвөр насанд эхлэх зан төрхийн болон сэтгэл хөдлөлийн эмгэгүүд	F90-F95, F98		Medical	383,798	0.452
19	Mental Diseases and Disorders	F00-F09, F20-F99, R40-R51	19060	Сэтгэцийн органик эмгэг	F00-F06		Medical	927,726	1.092
19	Mental Diseases and Disorders	F00-F09, F20-F99, R40-R52	19070	Сэтгэл хөөрөх нэг удаагийн тохиол	F30		Medical	793,520	0.934
19	Mental Diseases and Disorders	F00-F09, F20-F99, R40-R53	19080	Стрессстэй холбоотой эмгэгүүд	F40-F44		Medical	934,849	1.100
19	Mental Diseases and Disorders	F00-F09, F20-F99, R40-R54	19090	Бие хүний өвөрмөц ба холимог эмгэг	F60-F62		Medical	750,931	0.884
19	Mental Diseases and Disorders	F00-F09, F20-F99, R40-R55	19100	Хөгжлийн ерөнхий эмгэгүүд	F84		Medical	1,096,159	1.290
19	Mental Diseases and Disorders	F00-F09, F20-F99, R40-R56	19110	Хоёр туйлт сэтгэл цочирдлын эмгэг	F31		Medical	1,077,712	1.268
19	Mental Diseases and Disorders	F00-F09, F20-F99, R40-R57	19120	Органик бус солиорох эмгэг	F24-F29		Medical	3,021,106	3.555
19	Mental Diseases and Disorders	F00-F09, F20-F99, R40-R58	19130	Сэтгэл гутрал	F32-F34		Medical	1,317,365	1.550
19	Mental Diseases and Disorders	F00-F09, F20-F99, R40-R59	19140	Оюуны хүнд хомсдол	F72-F78		Medical	2,988,377	3.517
20	Alcohol/Drug Use or Induced Mental Disorders	F10-F19	20010	Олон төрлийн сэтгэц идэвхит ба донтолт үүсгэх бодисыг хослуулан хэрэглэсний улмаас үүсэх сэтгэц болон зан төрхийн эмгэгүүд	F19		Medical	1,833,732	2.158
20	Alcohol/Drug Use or Induced Mental	F10-F19	20020	Инсулинээс үл хамаарах чихрийн шижин	E11		Medical	717,763	0.845

	Disorders								
20	Alcohol/Drug Use or Induced Mental Disorders	F10-F19	20030	Архины шалтгаант сэтгэцийн болон зан төрхийн эмгэгүүд	F10		Medical	1,266,049	1.490
21	Injuries	S10-S99, T00-T14, T36-T88, T91-T98	21500	Түнх ба гуя орчмын өнгөц гэмтэл, шарх, дунд чөмөгний хугарал	S70-S72	1.9, 86.69, 78.5, 78.6, 79.15, 79.35, 81.51, 81.52	Major	1,358,043	1.598
21	Injuries	S10-S99, T00-T14, T36-T88, T91-T99	21010			Medical	535,876	0.631	
21	Injuries	S10-S99, T00-T14, T36-T88, T91-T100	21510			Minor	1,316,789	1.550	
21	Injuries	S10-S99, T00-T14, T36-T88, T91-T101	21520	Өвдөг ба шилбэний гэмтэл	S80-S81, 83-S86	79.3, 81.45, 83.64, 82.53, 83.14, 86.22, 86.69	Major	1,397,472	1.644
21	Injuries	S10-S99, T00-T14, T36-T88, T91-T102	21020			Medical	553,492	0.651	
21	Injuries	S10-S99, T00-T14, T36-T88, T91-T103	21530	Цээжний болон хэвлийн хөндийн эрхтэний гэмтэл	S23-S29, S36	34.82, 41.5, 46.75, 54.19	Major	1,619,333	1.906
21	Injuries	S10-S99, T00-T14, T36-T88, T91-T104	21030			Medical	1,701,719	2.002	
21	Injuries	S10-S99, T00-T14, T36-T88, T91-T105	21540			Minor	1,927,334	2.268	
21	Injuries	S10-S99, T00-T14, T36-T88, T91-T106	21550	Мөр ба бугалга, шууны гэмтэл	S43-S46, S53-59	39.31, 79.39, 4.03, 4.3, 4.43, 4.6, 82.42, 82.43	Major	813,999	0.958
21	Injuries	S10-S99, T00-T14, T36-T88, T91-T107	21040			Medical	596,413	0.702	
21	Injuries	S10-S99, T00-T14, T36-T88, T91-T108	21560			Minor	796,471	0.937	
21	Injuries	S10-S99, T00-T14, T36-T88, T91-T109	21570	Бугуй ба сарвууны гэмтэл	S60-S61, S67-S69	86.22, 86.61, 86.62, 86.73, 83.14, 83.19	Major	881,762	1.038
21	Injuries	S10-S99, T00-T14, T36-T88, T91-T110	21050			Medical	400,860	0.472	

21	Injuries	S10-S99, T00-T14, T36-T88, T91-T111	21580			84.01, 86.28, 86.01	Minor	1,427,699	1.680
21	Injuries	S10-S99, T00-T14, T36-T88, T91-T112	21590	Шилбэ, шагай, тавхайн гэмтэл	S87-S88, S92-S98		Major	749,527	0.882
21	Injuries	S10-S99, T00-T14, T36-T88, T91-T113	21060			Medical	787,889	0.927	
21	Injuries	S10-S99, T00-T14, T36-T88, T91-T114	21070	Хүзүүний гэмтэл, цээжний өнгөц гэмтэл, шарх	S13-S21		Medical	1,821,281	2.143
21	Injuries	S10-S99, T00-T14, T36-T88, T91-T115	21080	Түнх ба гуяны гэмтэл	S73-S76		Medical	527,563	0.621
21	Injuries	S10-S99, T00-T14, T36-T88, T91-T116	21600	Шилбэний яс шагайн хамт хугарах	S82	78.6, 79.1, 79.16, 79.3, 79.36	Major	478,742	0.563
21	Injuries	S10-S99, T00-T14, T36-T88, T91-T117	21090			Medical	475,133	0.559	
21	Injuries	S10-S99, T00-T14, T36-T88, T91-T118	21610			93.51	Minor	272,368	0.321
21	Injuries	S10-S99, T00-T14, T36-T88, T91-T119	21620	Шагай ба тавхайн өнгөц гэмтэл, шарх	S90-S91	59.9, 83.14, 86.69	Major	1,503,466	1.769
21	Injuries	S10-S99, T00-T14, T36-T88, T91-T120	21100	Биеийн олон хэсгийг хамарсан хугарал, гэмтэл	T02-T03		Medical	141,560	0.167
21	Injuries	S10-S99, T00-T14, T36-T88, T91-T121	21110	Пестицидын хордуулах нөлөө	T60		Medical	1,317,518	1.550
21	Injuries	S10-S99, T00-T14, T36-T88, T91-T122	21630	Өөр бүлэгт ангилаагүй ажилбарын хүндрэл	T81	78.69	Major	1,332,308	1.568
21	Injuries	S10-S99, T00-T14, T36-T88, T91-T123	21640	Протез, суулгац ба шилжүүлэн суулгасан эдийн хүндрэл	T83-T84	68.4, 69.4	Major	538,471	0.634
21	Injuries	S10-S99, T00-T14, T36-T88, T91-T124	21650			69.59, 69.97	Minor	399,036	0.470
21	Injuries	S10-S99, T00-T14, T36-T88, T91-T125	21660	Гадны шалтгааны ба тодорхойгүй нөлөөллийн үлдэц	T95-T98	86.63, 86.64, 86.84	Major	1,267,773	1.492
21	Injuries	S10-S99, T00-T14, T36-T88, T91-T126	21120			Medical	1,098,667	1.293	

21	Injuries	S10-S99, T00-T14, T36-T88, T91-T127	21130	Хүзүү ба их биеийн гэмтлийн үлдэц	T91		Medical	1,564,381	1.841
21	Injuries	S10-S99, T00-T14, T36-T88, T91-T128	21670	Дээд мөчний гэмтлийн үлдэц	T92	4.49, 4.6, 78.62, 78.63, 78.69, 82.79	Major	617,735	0.727
21	Injuries	S10-S99, T00-T14, T36-T88, T91-T129	21140				Medical	615,074	0.724
21	Injuries	S10-S99, T00-T14, T36-T88, T91-T130	21680	Доод мөчний гэмтлийн үлдэц	T93	78.65, 78.67, 86.22	Major	1,106,580	1.302
21	Injuries	S10-S99, T00-T14, T36-T88, T91-T131	21150	Хүзүүний өнгөц гэмтэл, шарх	S10		Medical	1,027,937	1.210
21	Injuries	S10-S99, T00-T14, T36-T88, T91-T132	21690	Хүзүү хугарах	S12	48.5, 81.02, 84.51	Major	1,246,703	1.467
21	Injuries	S10-S99, T00-T14, T36-T88, T91-T133	21700	Хавирга, өвчүү ба сээр хугарах	S22	3.53	Major	4,611,780	5.427
21	Injuries	S10-S99, T00-T14, T36-T88, T91-T134	21160				Medical	797,098	0.938
21	Injuries	S10-S99, T00-T14, T36-T88, T91-T135	21710	Хэвлий, зоонуруу ба аарцгийн өнгөц гэмтэл, шарх	S30-S31	56.82, 64.41, 71, 71.4, 71.9	Major	159,126	0.187
21	Injuries	S10-S99, T00-T14, T36-T88, T91-T136	21170				Medical	1,452,180	1.709
21	Injuries	S10-S99, T00-T14, T36-T88, T91-T137	21720	Бүсэлхий нуруу ба аарцаг ясны хугарал	S32	3.53, 79.39	Major	1,926,573	2.267
21	Injuries	S10-S99, T00-T14, T36-T88, T91-T138	21180				Medical	586,989	0.691
21	Injuries	S10-S99, T00-T14, T36-T88, T91-T139	21730				Minor	920,319	1.083
21	Injuries	S10-S99, T00-T14, T36-T88, T91-T140	21740	Хэвлий, зоонуруу ба аарцгийн гэмтэл	S37-S39	55.5, 55.81	Major	2,006,079	2.361
21	Injuries	S10-S99, T00-T14, T36-T88, T91-T141	21190				Medical	1,550,698	1.825
21	Injuries	S10-S99, T00-T14,	21200	Мөр ба бугалгын өнгөц гэмтэл, шарх	S40-S41		Medical	421,318	0.496

		T36-T88, T91-T142									
21	Injuries	S10-S99, T00-T14, T36-T88, T91-T143	21750	Мөр ба бугалгын хугарал	S42	78.62, 79.01, 79.11, 79.3, 79.31	Major	898,627	1.057		
21	Injuries	S10-S99, T00-T14, T36-T88, T91-T144	21210						Medical	1,633,648	1.922
21	Injuries	S10-S99, T00-T14, T36-T88, T91-T145	21760					93.51	Minor	506,092	0.596
21	Injuries	S10-S99, T00-T14, T36-T88, T91-T146	21770	Шууны өнгөц гэмтэл, шарх	S50-S51	86.69	Major	784,594	0.923		
21	Injuries	S10-S99, T00-T14, T36-T88, T91-T147	21220						Medical	301,264	0.355
21	Injuries	S10-S99, T00-T14, T36-T88, T91-T148	21780					86.28	Minor	1,550,331	1.824
21	Injuries	S10-S99, T00-T14, T36-T88, T91-T149	21790	Шууны ясны хугарал	S52	60.9, 79, 79.12, 79.3, 79.32	Major	507,430	0.597		
21	Injuries	S10-S99, T00-T14, T36-T88, T91-T150	21230						Medical	205,325	0.242
21	Injuries	S10-S99, T00-T14, T36-T88, T91-T151	21800	Бугуй ба сарвууны хугарал	S62	79.3, 79.31	Major	410,926	0.484		
21	Injuries	S10-S99, T00-T14, T36-T88, T91-T152	21240						Medical	493,301	0.580
21	Injuries	S10-S99, T00-T14, T36-T88, T91-T153	21810	Бугуй ба сарвууны үений гэмтэл	S63-S66	4.3, 4.43, 82.4, 82.42, 82.43, 82.56, 82.79	Major	647,040	0.761		
21	Injuries	S10-S99, T00-T14, T36-T88, T91-T154	21250						Medical	384,917	0.453
21	Injuries	S10-S99, T00-T14, T36-T88, T91-T155	21820					20.01, 79.84	Minor	371,896	0.438
22	Burns	T20-T25, T28-T35	22500	Бугуй ба сарвуу халууны үйлчлэлээр түлэгдэх, I зэрэг	T23.0-T23.1	86.62	Major	316,963	0.373		
22	Burns	T20-T25, T28-T36	22010						Medical	468,549	0.551
22	Burns	T20-T25, T28-T37	22510	Мөрний бүслүүр, дээд	T22.3-T22.7,	86.69	Major	1,633,947	1.923		

22	Burns	T20-T25, T28-T38	22020	мөч, бугуй ба сарвууны хэсгийн III зэргийн түлэгдэл	T23.7		Medical	438,590	0.516
22	Burns	T20-T25, T28-T39	22520	Түнх ба доод мөчний шагай ба тавхайны түлэгдэл, III зэрэг	T24.3, T25.3	86.69	Major	1,143,795	1.346
22	Burns	T20-T25, T28-T40	22030				Medical	862,645	1.015
22	Burns	T20-T25, T28-T41	22040	Түнх ба доод мөчний шагай ба тавхайнаас бусад хэсэг халууны үйлчлэлээр түлэгдэх, зэрэг тодорхойгүй	T24.0		Medical	396,904	0.467
22	Burns	T20-T25, T28-T42	22530	Бусад дотор эрхтэн халууны ба химийн үйлчлэлээр түлэгдэх	T28	42.85	Major	275,932	0.325
22	Burns	T20-T25, T28-T43	22540			42.23	Minor	205,742	0.242
22	Burns	T20-T25, T28-T44	22550	Биеийн олон хэсэг халууны ба химийн үйлчлэлээр түлэгдэх	T29	86.67	Major	1,666,306	1.961
22	Burns	T20-T25, T28-T45	22050				Medical	2,798,495	3.293
22	Burns	T20-T25, T28-T46	22060	Биеийн олон хэсгийн ба тодорхойгүй хөлдөлт	T35		Medical	273,477	0.322
22	Burns	T20-T25, T28-T47	22560	Эдийн үхжилтэй хөлдөлт	T34	84.12, 86.22	Major	1,764,374	2.076
22	Burns	T20-T25, T28-T48	22070				Medical	929,596	1.094
22	Burns	T20-T25, T28-T49	22570			84.01	Minor	1,673,352	1.969
22	Burns	T20-T25, T28-T50	22080	Мөрний бүслүүр ба дээд мөчний бугуй ба сарвуунаас бусад хэсэг халууны ба химийн үйлчлэлээр түлэгдэх	T22		Medical	165,036	0.194
22	Burns	T20-T25, T28-T51	22580	Толгой ба хүзүүний түлэгдэл, III зэрэг	T20.3	86.69	Major	2,817,619	3.316
22	Burns	T20-T25, T28-T52	22090				Medical	877,238	1.032
22	Burns	T20-T25, T28-T53	22100	Их бие халууны үйлчлэлээр түлэгдэх, зэрэг тодорхойгүй	T21.0		Medical	231,166	0.272
22	Burns	T20-T25, T28-T54	22110	Их биеийн түлэгдэл, III зэрэг	T21.3		Medical	994,596	1.170
22	Burns	T20-T25, T28-T55	22590	Мөрний бүслүүр ба дээд мөчний бугуй ба сарвуунаас бусад хэсгийн түлэгдэл, II зэрэг	T22.2	86.63	Major	688,942	0.811
								<b>849,815</b>	



